



**SANY**

# PERFORMANCE 365 DAYS A YEAR

Any Conditions. Any Terrain.  
Any Climate.

CONSTRUCTION MACHINERY



## LARGE EXCAVATOR **SY365H Pro**

Engine  
Isuzu 6HK1  
Rated power  
212kW / 2000 rpm  
Bucket capacity  
1.6 - 2.32 m<sup>3</sup>  
Operating mass  
36 700 kg

# SANY

## For challenging tasks, you need a first-class partner

Quality comes from experience. And from new ideas. This is why we combine these two crucial factors at SANY. This is because we are one of the world's leading producers, having sold more than **320 000** excavators in **10 years**. This means that you can always rely on sophisticated products that have been tried and tested in practice. An impressive **5-7%** of our annual turnover is dedicated to research and development.

**320 000**  
EXCAVATORS SOLD IN  
**10 YEARS**

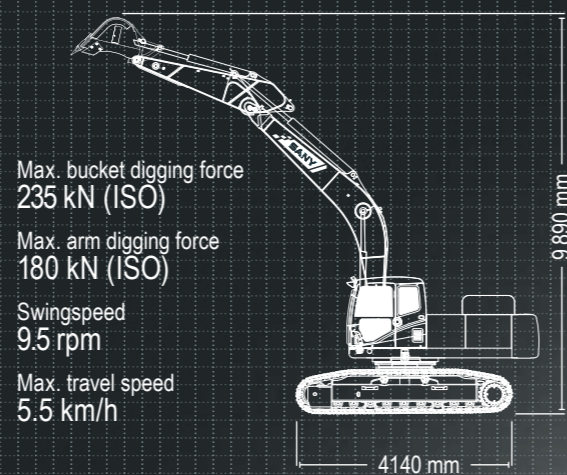
**5-7%**  
TURNOVER FOR RESEARCH  
AND DEVELOPMENT

Quality Changes the World

**SY365H Pro**



### SY365H Pro HARD FACTS



## AN ALLROUNDER WITH IMPRESSIVE POWER

With the SY365H Pro excavator, we have added a new dimension to the term "flexibility". Straight from the factory, it is already equipped in such a versatile way that it is ideal for carrying out a wide range of tasks with the relevant attachment devices on all construction sites, whether in road construction, materials handling or demolition work. No matter how the

SY365H Pro is used, its stability and power ensure that the required operational movements are performed quickly and safely. Its drive and hydraulics leave nothing to be desired and combine power, reliability and precision for impressive productivity. Just as you would expect from an excavator within this category.



# TOP PROPERTIES

ECONOMY

# SETS NEW STANDARDS FOR PRODUCTIVITY

Power is not enough on its own. To ensure that work is economical, you must be able to use power where it is needed in a targeted way. For the SANY SY365H, this ability is ensured by the fact that it is easy and precise to operate and has maximum stability. In addition, its hydraulic system has a sophisticated structure, which ensures that power is transferred efficiently for all work.

**SY365H Pro**

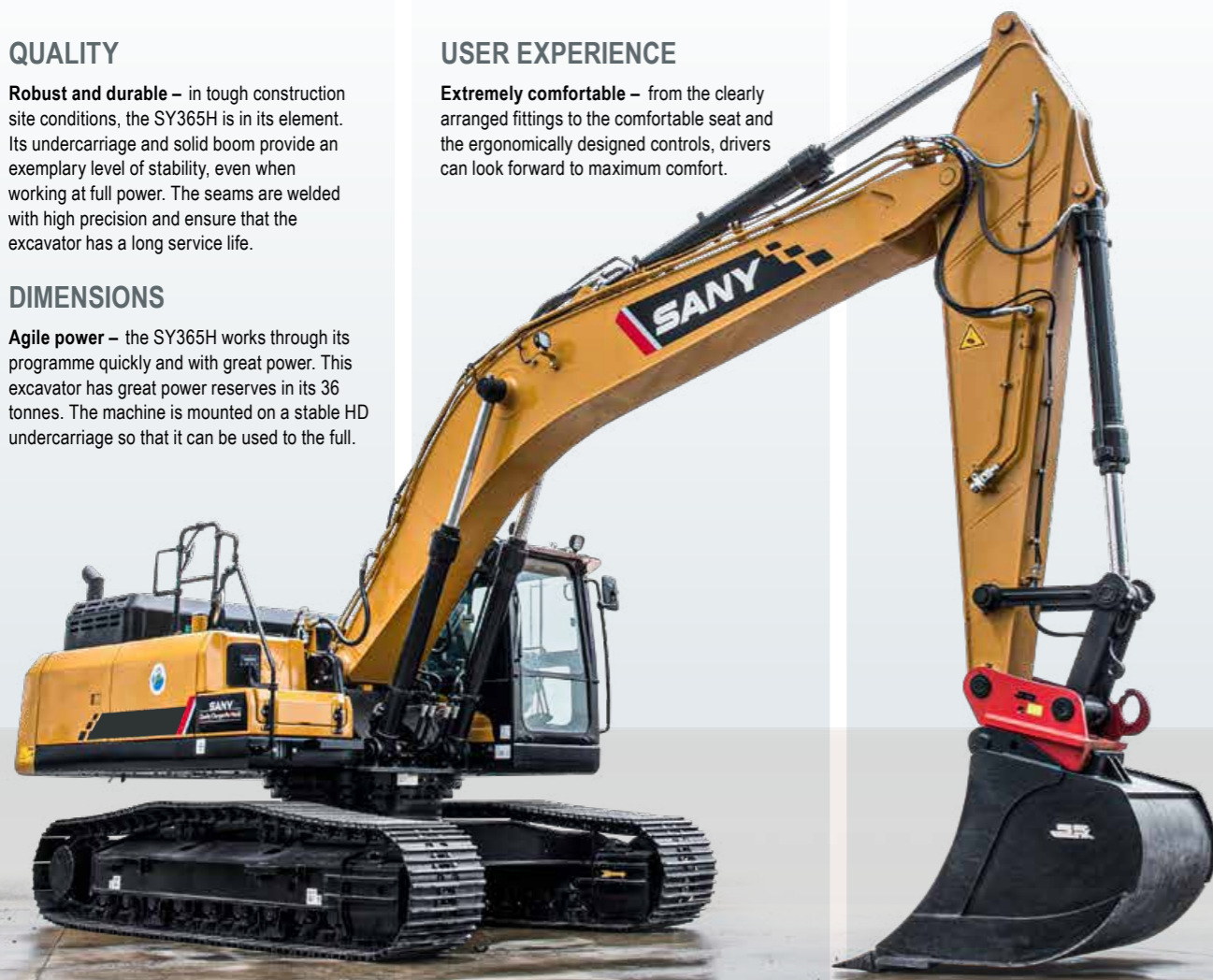


## QUALITY

**Robust and durable** – in tough construction site conditions, the SY365H is in its element. Its undercarriage and solid boom provide an exemplary level of stability, even when working at full power. The seams are welded with high precision and ensure that the excavator has a long service life.

## DIMENSIONS

**Agile power** – the SY365H works through its programme quickly and with great power. This excavator has great power reserves in its 36 tonnes. The machine is mounted on a stable HD undercarriage so that it can be used to the full.



## USER EXPERIENCE

**Extremely comfortable** – from the clearly arranged fittings to the comfortable seat and the ergonomically designed controls, drivers can look forward to maximum comfort.

## SAFETY

**Safety first** – The standard safety package includes safety valves and cameras for monitoring the rear and side work areas. The cameras help the driver to move the machine safely and efficiently, even if it is not possible to have an overview of the situation.

## COMPONENTS

**Pure power** – the tried-&-tested Izuzu engine unit and the reliable Kawasaki hydraulic system guarantee high performance, particularly when full power is required.

## ECONOMY

**Where efficiency meets power** – the efficient management of the engine and hydraulic system makes sure that all of the components interact optimally. This minimises consumption and lowers costs every time the excavator is used.

## SAFETY

### Protection for people and machines

With the SY365H Pro, safety begins before the excavator has even started up. To ensure that people, machines, tools and constructions are protected as optimally as possible, the standard equipment includes a safe route up to the cab, as well as handrails and anti-slip tread surfaces on the platform. This means that you are always on the safe side, including when carrying out maintenance work.

Rear cameras, and safety valves also come as standard.



## ECONOMY

### Where cost-effectiveness meets power

The SANY SY365H Pro is multifaceted when it comes to cost-effectiveness. The precise interplay between low engine speeds and hydraulic power which is optimally set to requirements provides the best fuel efficiency for every application.

The entire machine can also be precisely adapted to the requirements of each task by using the selectable operating modes. This means that you can achieve the optimum cost-effectiveness for your machine virtually at the touch of a button. Together with the sophisticated maintenance concept, this is the key to impressively low operating costs.



USER EXPERIENCE

# COMFORT THAT TOUGH GUYS APPRECIATE

The driver's cab has an impressive number of added benefits related to comfort. It is extensively insulated and minimises noise, vibrations and dust.

The driver's most important items can be kept in two storage compartments behind the seat; one of which is chilled. The air suspension driver's seat with a high seat backrest and individual adjustment options protects the driver's back during a long working day and prevents them from becoming fatigued. The heated seat supplied as standard is a pleasant feature on cold days.

The panoramic view provides a clear outlook for the working day ahead. The large front, side and rear windows give drivers optimum visibility in all directions. An automatic climate control system, a radio with a USB port and 12 V sockets are also supplied on board as standard.



USER EXPERIENCE

## There is no more sensitive way to control power

Working precisely is the key to greater cost-effectiveness and satisfied customers. The ergonomic joystick levers apply the required movements in a particularly sensitive way, immediately and with pinpoint accuracy.



USER EXPERIENCE

## For an even better overview

All the important information for the driver is shown clearly on the large multifunctional monitor. This prevents the excavator from being operated incorrectly and increases the operating speed.



### Our highlights – the added benefits SANY offers you:

- + Heavy Duty undercarriage
- + Fast, powerful hydraulics
- + A clear overview of instruments and display
- + High-quality welded seams
- + Extensive safety equipment
- + Comfortable driver's cab
- + ROPS/FOPS-certified



QUALITY

## Good reasons to be into heavy metal

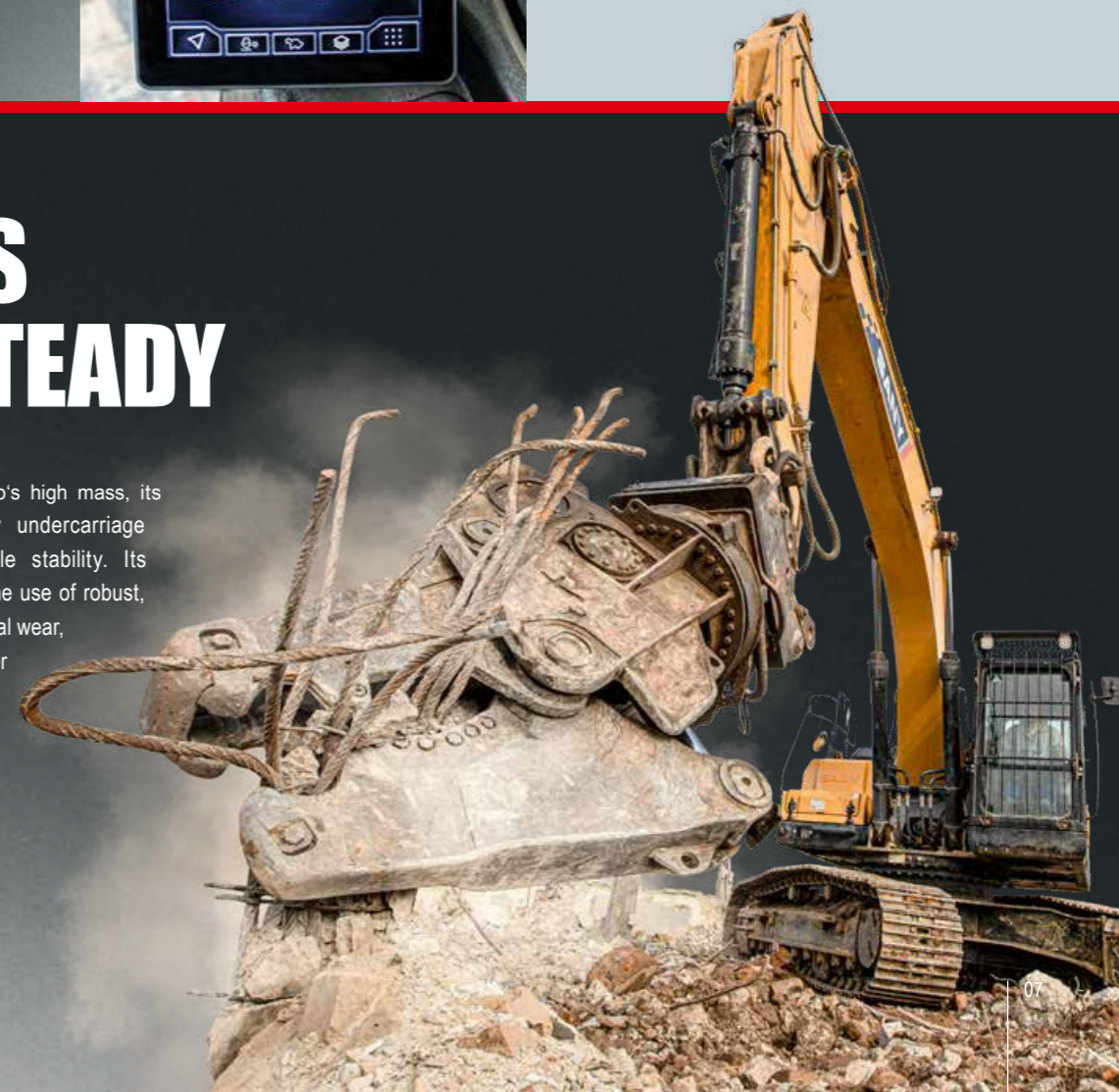
The machines have a great deal of work to do during their tough day-to-day work on construction sites. This is why – from the design stage, to selecting the materials used, machining and conducting the final checks – all excavators by SANY are designed to be robust. For instance, all of the welded seams

are computer-controlled by robots. This ensures stability and reliability. In addition, the robust, wide heavy-duty undercarriage provides a high level of stability. This allows the SY365H Pro to optimally apply its power. Also good to know: All of the access panels are only made from metal.

DIMENSIONS

# ALWAYS STAY STEADY

Combined with the SY365H Pro's high mass, its particularly stable heavy-duty undercarriage provides the greatest possible stability. Its integrated reinforcements and the use of robust, high-strength steel ensure minimal wear, even when used continually under the maximum load. The steel chains used also offer the best quality standard – for secure stability on any surface.



## ENGINE

Model	Isuzu 6HK1
Type	Electronic injection, 6-cylinder, 4-stroke, turbocharged, inter-cooling and water-cooled
Rated power	212 kW / 2 000 rpm
Max. torque	1080 Nm /1500 rpm
Displacement	7.79L
Batteries	24 V

## HYDRAULIC SYSTEM

Main pump	Kawasaki 160CC dual-ratio positive-flow main pump
Max. oilflow	2 x 380 L/min
Travel motor	Nabo M3V270/160D-RG7.5D
Swing motor	Kawasaki M5×180

## RELIEF VALVE SETTINGS

Implement circuit	34.3 Mpa
Swing circuit	25.5 Mpa
Travel circuit	34.3 Mpa
Pilot pressure	3.9 Mpa

## SERVICE REFILL CAPACITIES

Fuel tank	690 l
Engine coolant	30l
Engine oil	36l
Drive (per side)	8.5 l
Hydraulic oil tank	380 l

## PERFORMANCE

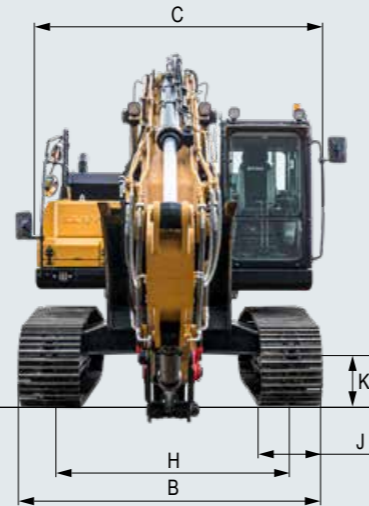
Swingspeed	9.5 rpm
Max. travel speed	High 5.5 km/h, slow 3.5 km/h
Gradeability	35°
Bucket capacity	1.6 m <sup>3</sup>
Ground pressure	65 kPa
Bucket digging force ISO	235 kN
Arm digging force ISO	180kN

## UNDER AND UPPER STRUCTURE

Boom length	6 500 mm
Arm length	2 900 mm
Bottom rollers	1.6
Top rollers	2

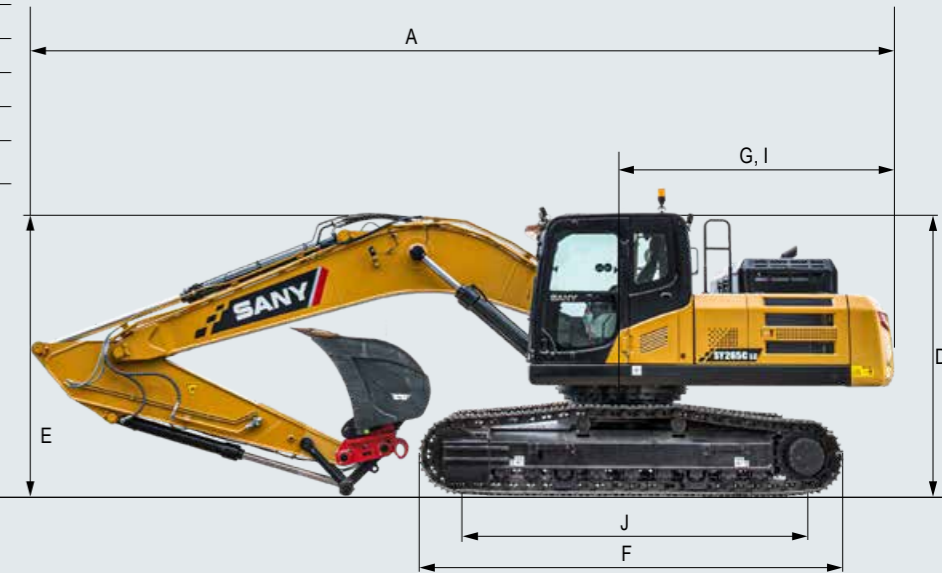
## OPERATING MASS

SY365H Pro	36 700 kg
------------	-----------



## DIMENSIONS (TRANSPORT)

A Transport length	11 530 mm
B Transport width	* 3 990 mm
C Upperstructure carriage	3 150 mm
D Height over cabin/ROPS	3 320 mm
E Height of Boom – transport	3 545mm
F Overall length of crawler	5 065mm
G Tail length	3 560mm
H Track gauge	2 590 mm
I Tail swing radius	3 560 mm
J Center distance of tumbler	4 140 mm



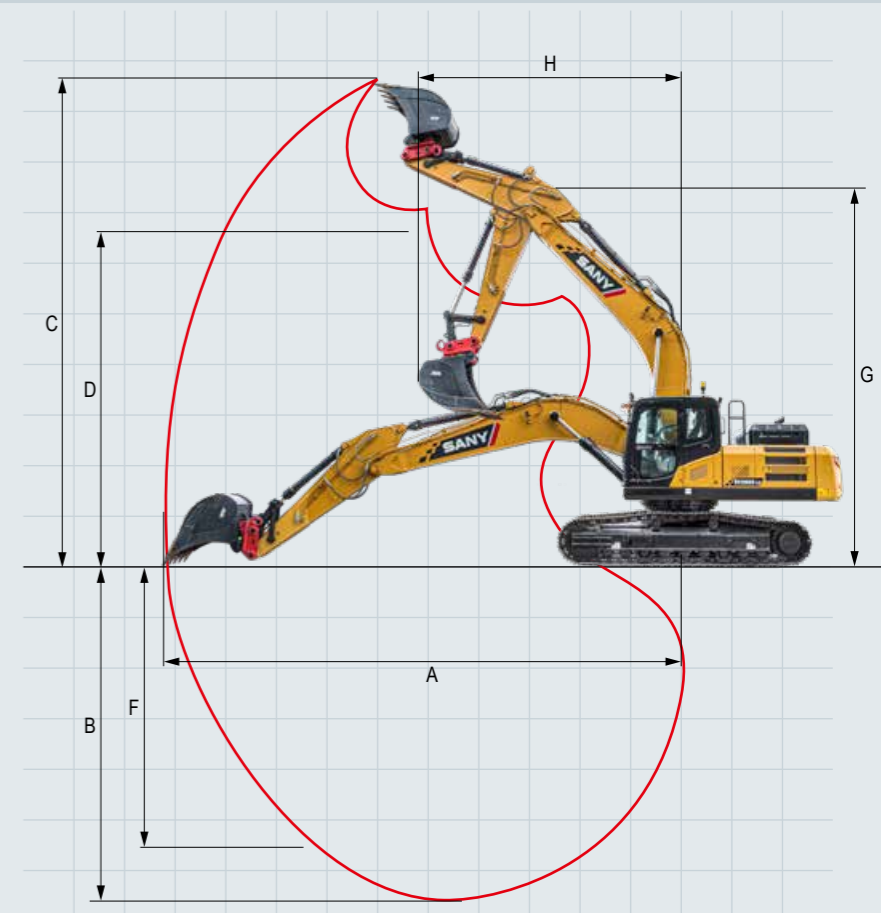
## LIFTING CAPACITIES\*

Load point height	Radius							
	3.0m	4.5m	6.0m	7.5m	9.0m			
4.5m kg	12146	12146	9592	9592	8269	6856		
3.0m kg	14650	14650	10745	5662	7093	5359	7696	5095
1.5m kg	16054	13197	11633	5333	7633	5195	7819	5004
Ground kg	16022	12950	11951	5515	7959	6293		
-1.5m kg	14577	14577	15082	12942	11590	8439	9137	6242
-3.0m kg	16715	16751	13312	13312	10420	8499	7924	6314

1. The lifting capacity is calculated in accordance with ISO10560 and SAEJ1097, where limit coefficient of hydraulic system is 0.87 and tilting limit coefficient is 0.75;  
 3. Lifting point is front support hole of bucket rod (excluding the weight of bucket). It is necessary to deduct from the above lifting capacity if additional accessory is installed such as bucket etc.;

## WORKING AREA

A Max. digging reach	10 780 mm
B Max. digging depth	7 050 mm
C Max. digging height	9 890 mm
D Max. dumping height	6 920 mm
F Max. vertical digging depth	3 970 mm
H Min. swing radius	4 495 mm



### The all-inclusive excavator

Thanks to its extensive range of equipment, the SY365H perfectly meets the ever-growing demands for an efficient crawler excavator in the medium category. It offers a comfortable and productive workstation, with unique performance and excellent extra features included as standard.



#### OPERATORS COMFORT / CABINE

Heater	•
Automatic air conditioning C/H*	•
Radio and speaker	•
Armrests (adjustable)	•
Airsuspension seat	•
Heated seat	•
Wiper	•
Sprayer f. wiper	•
AUX 1 on Joystick	•
AUX 2 on Joystick	•
Removable front-window	•
Sky light openable	•
Intergrated cooling box	•

#### WORKING EQUIPMENT

Boom and arm load holding valves with overload indicator	•
Double acting circuit for hydraulic quick coupler with piping	•
Breaker&Shear line proportional on Joystick with piping	•
Rotation line proportional on Joystick with piping	•
Rotation line on Joystick with piping	•
Flow adjustment for attachments	•
Short arm	•

#### UNDERCARRIAGE

Steel tracks 600	•
Steel tracks 700	•
Steel tracks 800	•
Holes/loops for fixing	•

Standard equipment • Special option •

The standard and special options differ depending on the country in which the crawler excavator is delivered.

#### WORKING LIGHTS

Lights – front (LED)	•
Lights – boom (LED)	•
Lights – platform (LED)	•
Lights – back (LED)	•

#### ENGINE

Auto idle	•
Diesel filter	•
DOC	•

#### HYDRAULIC SYSTEM

Swing brake	•
2 speed travel	•
Piping for additional hydraulic function AUX 1	•
Piping for additional hydraulic function AUX 2	•
Hydr. Pre-pressure operating joysticks	•
Mainfilter	•

#### SAFETY

Battery master switch	•
Travel Alarm	•
Warning beacon	•
Camera	•
Handrails	•
Lockable hoods	•
Lockable fuel cap	•

# A SERVICE YOU CAN RELY ON

In the event of a breakdown during your warranty period, Vertu will come to your site as soon as possible to get your machine back up and running. If the repair cannot be undertaken on-site or in good time, Vertu will arrange a similar replacement while your machine is repaired under warranty

#### National Service Representation

Our national service network partnerships provide certainty that you are supported with service and parts, wherever you are located.

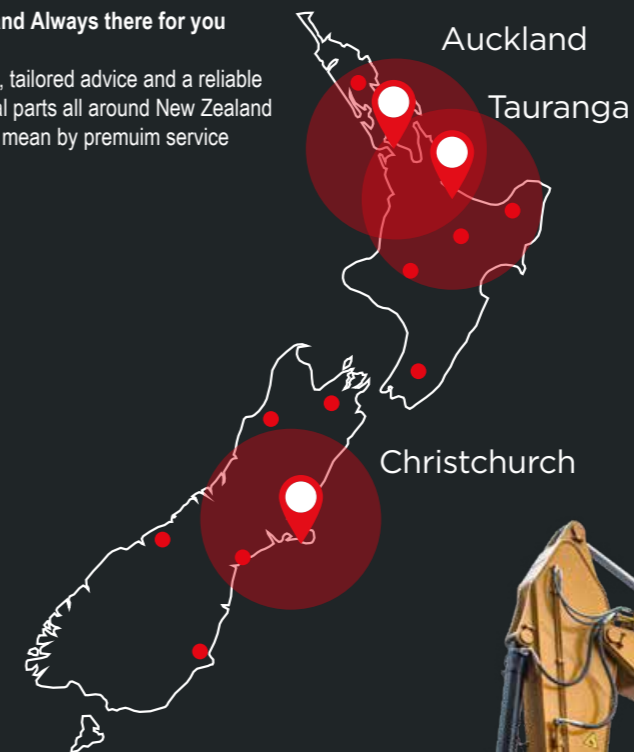
#### Parts and Inventory

As the dealer of SANY excavators, roading and construction equipment Vertu holds a significant inventory of SANY Genuine and aftermarket parts and attachments, both in New Zealand and Australia to keep you going. With direct relationships locally and internationally we can source parts quickly and as a matter of priority.



#### Flexible, Fast and Always there for you

Paid assistance, tailored advice and a reliable supply of original parts all around New Zealand That is what we mean by premium service



#### The added benefits SANY offers you:

- ✦ Fast supply thanks to the New Zealand Vertu Locations
- ✦ More than 15,000 spare parts to make your machine highly reliable
- ✦ Expert knowledge for optimal supply for your machine
- ✦ Thanks to SANY's special training programme, our dealers are always kept up-to-date so that they can face all technical challenges.

### Parts supply – quick and reliable

With the purchase of a SANY crawler excavator you have made an investment in the future. Fast availability of spare parts is your guarantee of minimal downtimes and failure times.



### Detailed information in black and white

Handbooks and documents are available for all SANY crawler excavators, and these can help you with operation, maintenance, servicing and repairs. These include operating and maintenance instructions and technical specifications.



HIGHLIGHTS **SY365H Pro**

# COMPACT POWER FOR VERSATILE USE

The SANY SY365H Pro embodies reliable and fuel-efficient high performance – perfectly housed in a compact, robust crawler excavator. It demonstrates its impressive cost-effectiveness and great versatility in its tough day-to-day use.



**SANY**

Vertu Equipment  
0800 837 888  
[www.vertuequipment.co.nz](http://www.vertuequipment.co.nz)  
[info@vertuequipment.co.nz](mailto:info@vertuequipment.co.nz)

Auckland  
510 Ellerslie-Panmure Hwy  
Mount Wellington

Tauranga  
23a Hewletts Ave  
Mount Maunganui

Christchurch  
52 Hickory Place,  
Islington

