



COMPACT POWERHOUSE

VERSATILE AS STANDARD.

CONSTRUCTION MACHINERY



COMPACT EXCAVATORS **SY75C**

Engine
YANMAR 4TNV98CT
Rated Power
42.4 kW / 1900 rpm
Bucket capacity
0.28 m³
Operating mass
7 280 kg

SANY

For challenging tasks, you need a first-class partner

Quality comes from experience. And from new ideas. This is why we combine these two crucial factors at SANY. This is because we are one of the world's leading producers, having sold more than **320 000** excavators in **10 years**. This means that you can always rely on sophisticated products that have been tried and tested in practice. An impressive **5–7%** of our annual turnover is dedicated to research and development. This is why we give you not only our word, but also our extraordinary **five-year warranty** as a guarantee of how powerful and robust our products are.

320 000
EXCAVATORS SOLD IN
10 YEARS

5–7%
TURNOVER FOR RESEARCH
AND DEVELOPMENT

**FIVE-YEAR
WARRANTY***

Quality Changes the World

* Applicable in certain markets, please check with your local dealer.



SY75C

RAISING THE BAR IN THE COMPACT CLASS

The new SANY SY75C – powerful and with a large excavation depth, this machine completes all tasks efficiently and with a reliable performance. The excavator's sophisticated structure allows it to tackle very high loads with exemplary stability. Moreover, the cab's state-of-the-art design is reminiscent of a comfortable car interior. This is not only visually appealing to drivers – the cab's comfort and ergonomics are precisely tailored to the requirements for safe and concentrated work.

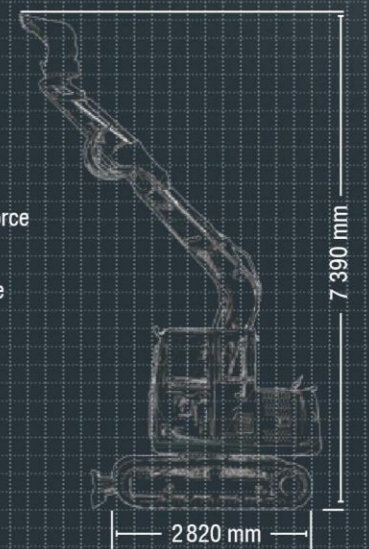
SY75C HARD FACTS

Max. bucket digging force
53 kN (ISO)

Max. arm digging force
35 kN (ISO)

Swingspeed
10.5 rpm

Max. travel speed
5.3 km/h



COMPONENTS

QUALITY TO THE LAST DETAIL

In conjunction with the exhaust treatment, the Yanmar engine always delivers a full and clean performance for every task. Its diesel particulate filter with self-regenerating coating ensures that the emission control is straightforward and performs reliably. Another benefit when it comes to durability and reliability is the fact that the top rollers are mounted on both sides. This makes them more robust, even when subjected to high stress.



QUALITY

Completely sealed – the driver's cab's improved seal makes it a real comfort zone, keeping out noise, dust, exhaust gases, etc.

USER EXPERIENCE

Always optimally configured – it is easy to program different attachment devices, which saves time and money when changing them. The machine's modern interior ensures maximum comfort and therefore facilitates fatigue-free work. In addition, the Bluetooth interface allows operators to connect their mobile phone to the factory-fitted speakers to answer calls or play music.

DIMENSIONS

Optimal design – the undercarriage and structure are perfectly coordinated. The position of the boom also means that the excavator can lift higher loads over longer reaches than comparable machines in this weight class.



SAFETY

Everything in sight – the protected rear camera gives an accurate image of the surrounding area. The driver can see these images on the high-resolution display directly in their field of vision.

COMPONENTS

Powerful and clean – the high-torque Yanmar engine delivers full power in every situation. In addition, with its tailored exhaust treatment, the machine achieves emission standard 5 without any difficulty.

ECONOMY

Designed for maximum efficiency – the intelligent load-sensing hydraulic system always knows precisely how much hydraulic power is required for each task and delivers precisely the amount of oil needed.

Absolute reliability – for peace of mind!

SANY's five-year warranty* gives you the assurance that you can fully count on your equipment.



* With participating partners



COMPONENTS

Both hard and soft

The SY75C does not have any plastic covers. This machine consists solely of high-quality steel, which is particularly robust and quick and easy to repair in case of an emergency.

Despite weighing almost 7.5 tonnes, the com-steel tracks. Rubber tracks are also available if required as an optional extra.

machine drive smoothly.



USER EXPERIENCE

ON-BOARD COMFORT

While comfort has a lot to do with convenience, it has even more to do with health and safety and facilitating fatigue-free, concentrated work. Machine operators are therefore the focus of the entire design for the driver's cab. At the forefront are the joysticks, which make particularly precise work easy, and the high-resolution 7" touch display, which impresses with its simple and intuitive menu navigation and can even be operated when wearing gloves.

Moreover, the Bluetooth interface allows users to connect their phone in order to answer calls or simply to play music.

USER EXPERIENCE

Quicker maintenance

It is important to carry out routine daily checks. In spite of the machine's large dimensions, all of the areas relevant for maintenance – such as the air filter and engine oil monitoring – are arranged so that they are quickly and easily accessible from the ground.

USER EXPERIENCE

Optimal visibility in every respect

The extra-large front and side windows, as well the curved rear window provide optimal visibility of the entire working environment without any areas hidden. The standard rear camera covers visibility to the rear, sending a high-resolution image to the 7" touch display. There are also easy-to-adjust sun covers, which enable glare-free work even in difficult lighting conditions.



ECONOMY

Cost-effectiveness as standard

The high-torque drive unit is particularly fuelefficient, without sacrificing any performance. The driver can simply choose the optimal operating mode for different applications. For instance, you can switch from maximum power to maximum efficiency via touch operation and this will be reflected in the fuel costs. Another feature which saves time and costs is the fact that hydraulic quick-coupler is already included ex-works as standard and is incorporated into the overall operating concept. This makes it quick and easy to change attachment devices at the construction site and neatly incorporates this function into the overall operation of the machine.

ECONOMY

Exert a lot of pressure

Tried-and-tested Kawasaki technology is used for the machine's hydraulics. It can deliver up to 158 litres per minute, which is sufficient even for major tasks. Depending on the application, the load-sensing hydraulic system ensures that the machine always delivers precisely the amount of hydraulic power requested by the operator.



Our highlights – the added benefits SANY offers you:

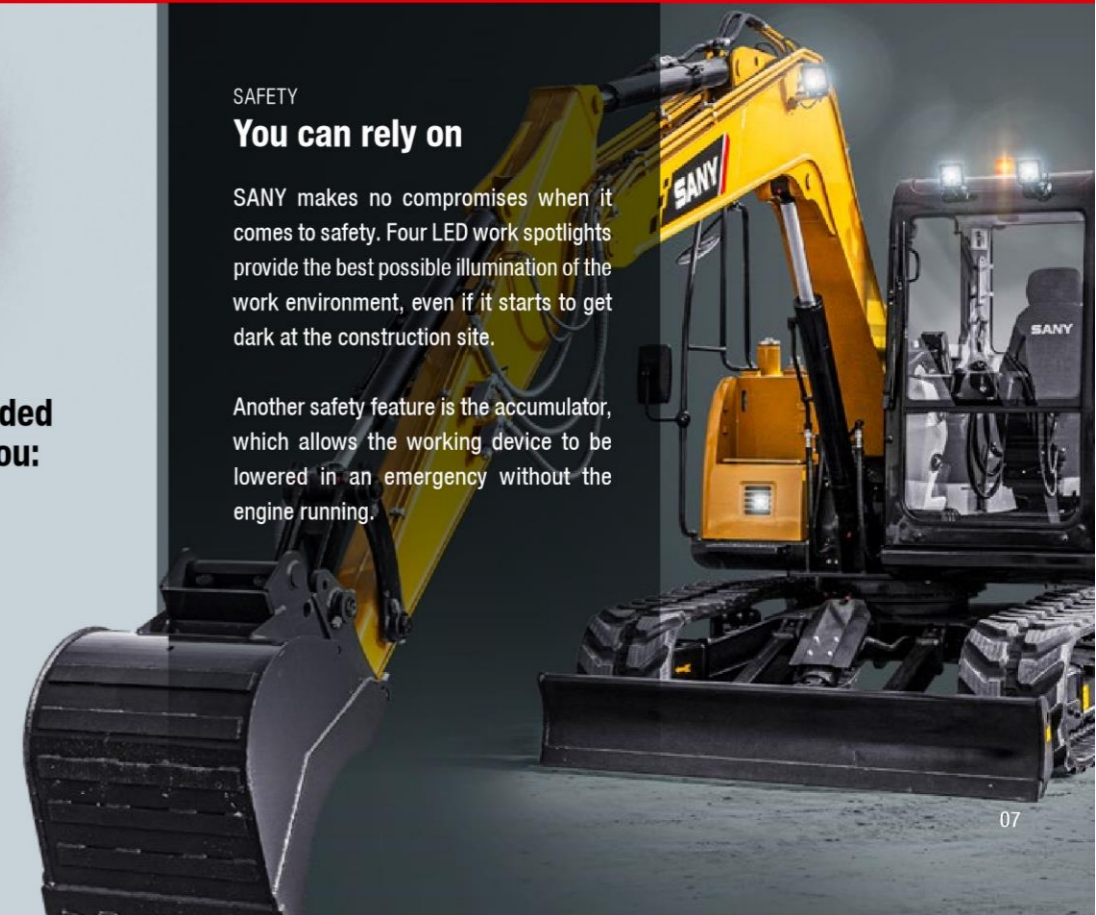
- + Comfortable driver's cab with modern equipment
- + Extensive programming options for attachment devices
- + Rear camera
- + High-resolution 7" touch display
- + 2 proportional auxiliary control circuits on the joystick

SAFETY

You can rely on

SANY makes no compromises when it comes to safety. Four LED work spotlights provide the best possible illumination of the work environment, even if it starts to get dark at the construction site.

Another safety feature is the accumulator, which allows the working device to be lowered in an emergency without the engine running.



ENGINE

Model	YANMAR 4TNV98CT
Typ	Water-cooled, 4 cylinder, with commonrail and DPF
Exhaust emissions	Stage V
Rated power	42.4 kW / 1 900 rpm
Max. torque	241 Nm / 1 300 rpm
Displacement	3 319 ccm
Batteries	1 × 12 V / 120 Ah

HYDRAULIC SYSTEM

Mainpump	Variable-piston-pump; Load sensing control
Max. oilflow	158 l/min
Travelmotor	Variable displacement axial piston motor
Swingmotor	Axial piston motor
Max. oilflow (AUX 1)	120 l/min
Max. oilflow (AUX 2)	70 l/min

SERVICE REFILL CAPACITIES

Fuel tank	150 l
Engine coolant	11 l
Engine oil	10.8 l
Drive (per side)	1.2 l
Hydraulic system	160 l
Hydraulic oil tank	120 l

PERFORMANCE

Swingspeed	10.5 rpm
Max. travel speed	High 5.3 km/h, slow 2.8 km/h
Max. travel force	56.8 kN
Gradeability	35°
Bucket capacity	0.28 m ³
Groundpressure	0.33 kg/cm ²
Bucket digging force ISO	53 kN
Arm digging force ISO	35 kN

RELIEF VALVE SETTINGS

Implement circuit	263 bar
Swing circuit	240 bar
Travel circuit	263 bar
Pilot pressure	39 bar

UNDER AND UPPER STRUCTURE

Boom length	3 720 mm
Arm length	2 050 mm
Bottomrollers	5
Toprollers	1
Rotation device	Planetary gear reducer driven by an axial piston motor, automatic hydraulic released slewing brake

OPERATING MASS

SY75C 7 280 kg

LIFTING CAPACITIES - DOZER BLADE DOWN

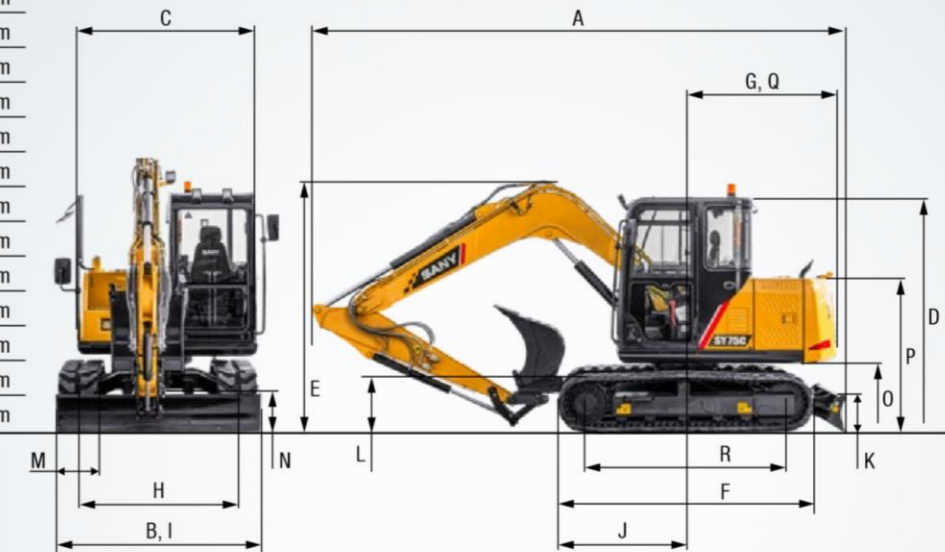
Load point height	Radius				Digging reach	
	1.0 m	3.0 m	5.0 m	Max.		
6.0 m kg	1 385 1 385			1 210	1 210	
5.0 m kg				1 020	1 020	
4.0 m kg	1 315	1 315	1 060	1 060	950	
3.0 m kg	1 710	1 710	1 460	1 225	930	
2.0 m kg	2 275	2 275	1 585	1 190	950	
1.0 m kg	2 790	2 400	1 715	1 155	960	
Ground line kg	3 085	2 315	1 815	1 125	1 105	
-1.0 m kg	2 105	2 105	3 138	2 275	1 805	
-2.0 m kg	3 415	3 415	2 955	2 280	1 680	
-3.0 m kg	2 395 2 340			1 885	1 820	

LIFTING CAPACITIES - DOZER BLADE UP

Load point height	Radius				Digging reach	
	1.0 m	3.0 m	5.0 m	Max.		
6.0 m kg	1 385 1 385			1 210	1 210	
5.0 m kg				1 020	1 020	
4.0 m kg	1 315	1 315	1 060	1 060	950	
3.0 m kg	1 710	1 710	1 310	1 225	930	
2.0 m kg	2 275	2 275	1 275	1 190	950	
1.0 m kg	2 630	2 400	1 235	1 155	960	
Ground line kg	2 540	2 315	1 205	1 125	1 050	
-1.0 m kg	2 105	2 105	2 500	2 275	1 195	
-2.0 m kg	3 415	3 415	2 510	2 280	1 370	
-3.0 m kg	2 395 2 340			1 885	1 820	

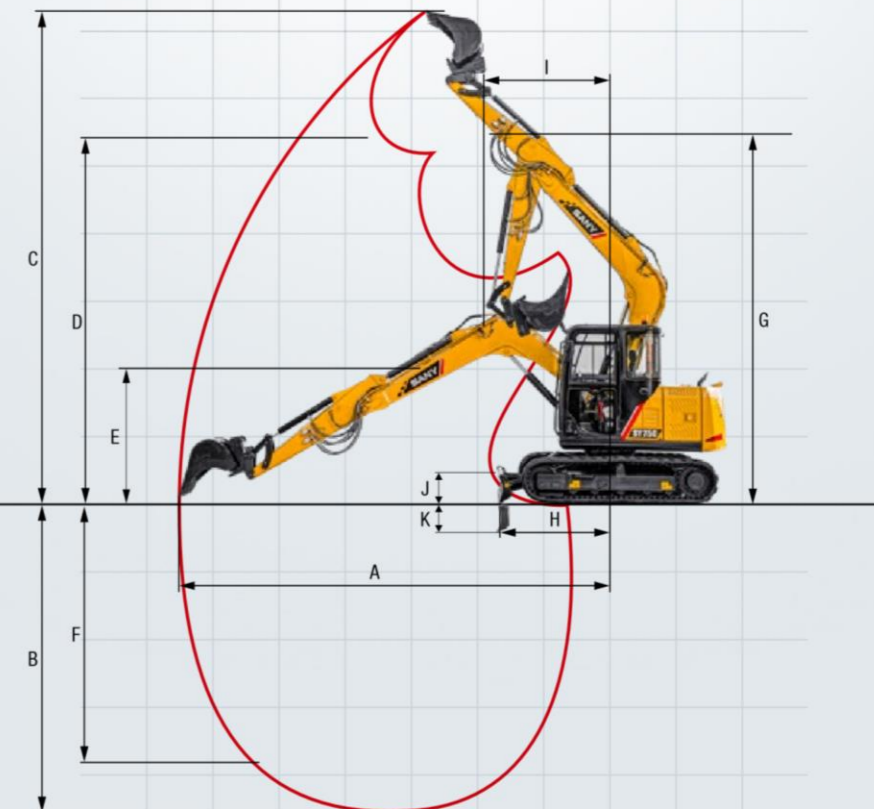
DIMENSIONS (TRANSPORT)

A Transport length	6 115 mm
B Transport width	2 220 mm
C Upperstructure carriage	2 040 mm
D Height over cabin/ROPS	2 570 mm
E Height of Boom – transport	2 720 mm
F Overall length of crawler	2 820 mm
G Tail length	1 800 mm
H Track gauge	2 195 mm
I Undercarriage width (blade)	2 220 mm
J Horizontal distance to blade	1 735 mm
K Blade height	405 mm
L Track height	680 mm
M Track pads width	450 mm
N Min. ground clearance	380 mm
O Counterweight clearance	750 mm
P Engine cover height	1 720 mm
Q Tail swing radius	1 800 mm
R Center distance of tumbler	1 750 mm



WORKING AREA

A Max. digging reach	6 505 mm
B Max. digging depth	4 450 mm
C Max. digging height	7 390 mm
D Max. dumping height	5 490 mm
E Min. dumping height	2 040 mm
F Max. vertical digging depth	3 840 mm
G Overall height over arm by min. swing radius	5 560 mm
H Arm head distance with work equipment retracted as far as possible	1 735 mm
I Min. swing radius	1 940 mm
J Max. clearance when blade up	390 mm
K Max. depth of blade down	330 mm





OPERATORS COMFORT / CABINE

Suspension seat	●
Heater	●
Automatic air conditioning C/H*	●
Radio and speaker	●
Armrests (adjustable)	●
USB port (music)	●
Wiper	●
AUX 1 on Joystick	●
AUX 2 on Joystick	●
8 stored hydraulic settings for attachments	●
Bluetooth interface	●

SAFETY

Battery master switch	●
Travel Alarm	●
Warning beacon	●
Lockable hoods	●

WORKING EQUIPMENT

Boom and arm load holding valves with overload indicator	●
Double acting circuit for hydraulic quick coupler with piping	●
Breaker&Shear line proportional on Joystick with piping	●
Rotation line proportional on Joystick with piping	●
Flow adjustment for attachments	●
Dozer blade	●

Standard equipment ● Special option ●

The standard and special options differ depending on the country in which the crawler excavator is delivered. If you have any questions, please contact your dealer directly.

* The air conditioner contains fluorinated greenhouse gases: Refrigerant type: HFC-134a, Global warming potential: 1 430, Quantity: 0,85 kg, CO₂e: 1,22 t

WORKING LIGHTS

Lights – front (LED)	●
Lights – boom (LED)	●
Lights – platform (LED)	●

UNDERCARRIAGE

Rubber tracks	●
Steel tracks	●
Holes/loops for fixing	●

ENGINE

Auto idle	●
DPF	●
DOC	●

HYDRAULIC SYSTEM

Swing brake	●
2 speed travel	●
Piping for additional hydraulic function AUX 1	●
Piping for additional hydraulic function AUX 2	●
Hydr. Pre-pressure operating joysticks	●

A SERVICE YOU CAN RELY ON

Just as we do with our excavators, we also demand high quality and reliability of our service products. This underlines our equipment's performance in terms of their durability and their excellent price-performance ratio. After all, maintenance is crucial

for efficiency, cost-effectiveness and safety. Your SANY dealer is happy to help you with a comprehensive range of services to ensure that your machine continues operating efficiently in the long term.

Global Brand, Local Knowledge
Flexible, fast, and always there for you

Rapid assistance, tailored advice, and a reliable supply of original parts all around New Zealand.



Our national service network provides certainty that you are supported with services and parts wherever you are located around New Zealand.

The Vertu Difference

- + Site visits to get your machine back up and running as soon as possible.
- + Significant inventory of SANY genuine and after market parts and attachments.
- + Expert knowledge including SANY trained technicians.
- + If a repair cannot be undertaken on-site or in good time, Vertu will arrange a similar replacement while your machine is repaired under warranty.



Parts supply – quick and reliable

With the purchase of a SANY compact excavator you have made an investment in the future. Fast availability of spare parts is your guarantee of minimal downtimes and failure times.



Detailed information in black and white

Handbooks and documents are available for all SANY compact excavators, and these can help you with operation, maintenance, servicing and repairs. These include operating and maintenance instructions and technical specifications.

HIGHLIGHTS **SY75C**

COMFORT MEETS EFFICIENCY

The SY75C is one of the most powerful SANY compact excavators and impresses with its robustness and power. The machine can deliver its full performance, whether in road construction or for loading work. With its powerful drive and compact dimensions, this excavator ensures high productivity during everyday work.



COMPLETELY COMFORTABLE AND SEALED

The driver's cab impresses with its **ergonomically designed controls**, comfortable driver's seat and outstanding visibility on all sides. It is also optimally sealed off and keeps noise, dust and vibrations away from the driver. In addition, the Bluetooth interface makes it easy for the operator to connect their mobile phone in order to answer calls or play music.

OPTIMAL DESIGN

With the SY75C, you can get a lot done. And it will remain **robust** and work **powerfully**.

EVERYTHING IN SIGHT

Perfect visibility on all sides and a rear camera image on a high-resolution display, offering the best views for precise and safe work.

POWERFUL AND CLEAN

With its **tailored exhaust treatment**, the Yanmar engine achieves **emission standard Stage V** without any difficulty. This means that it is not only environmentally friendly, but also **fuel-efficient**.

ALWAYS OPTIMALLY CONFIGURED

The **sensitive joystick** and clearly arranged **controls** allow machine operators to work safely, confidently and with **minimal force**.

DESIGNED FOR MAXIMUM EFFICIENCY

The intelligent **load-sensing hydraulic system** always knows precisely how much hydraulic power is required for each task and delivers precisely the amount of oil needed.

TECHNICAL HIGHLIGHTS

Rated power	42.4 kW / 1 900 rpm
Max. torque	241 Nm / 1 300 rpm
Bucket digging force ISO	53 kN
Swingspeed	10.5 rpm
Mainpump	Variable-piston-pump
Max. oilflow	158 l/min
Engine	YANMAR 4TNV98CT

Not all products are available in all markets. As part of our continuous improvement process, we reserve the right to modify specifications and designs without giving prior notice. The figures may contain additional options.

SANY

Quality Changes the World

VERTU EQUIPMENT
510 Ellerslie Panmure
Highway, Auckland.

Tel: 0800 837 888
www.vertuequipment.co.nz
info@vertuequipment.co.nz

 **VERTU** PLANT &
EQUIPMENT