

SCC2800A

Crawler Crane 280 Tons Lifting Capacity

Quality Changes the World



- Max. lifting capacity: 280t
- Max. lifting moment: 1620t·m
- Max. boom length: 86m
- Max. fixed jib combination: 62m+42m
- Max. luffing jib combination: 62m+63m

The parameters, pictures and standard/optional equipment are only for reference in this brochure, the actual machine is based on the effective price list and contract.



Crawler Crane Series
SCC2800A

P03

Main
Characteristics

- Product Specification
- Safety Devices

P10

Technical
Parameters

- Major Performance Specifications
- Outline Dimension
- Transport Plan
- Self-assembly plan

P22

Cofigurations

- Configurations
- H Configuration
- FJ configuration
- LJ Configuration
- FJh Configuration

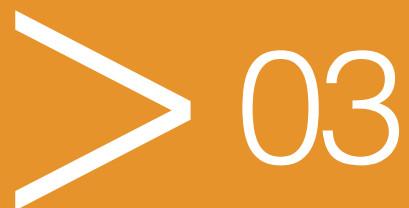


SCC2800A
SANY CRAWLER CRANE
280 TONS LIFTING CAPACITY

QUALITY CHANGES THE WORLD

Main Characteristics

- Page 04 Product Specification
- Page 08 Safety Devices



Product Specification



Engine

- Model: Chinese Cummins (DCEC) QSL8.9-C325 diesel engine;
- Type: 4-stroke, water-cooled, vertical in-line 6 cylinders, direct injection, turbo-charger, intercooler, complied with European Off-way Tier III Emission Standard and Chinese Off-way Tier III Emission Standard;
- Displacement: 8.9L;
- Rated power: 242kW/2100rpm;
- Max. Torque: 1385N·m/1500rpm;
- Cooling system: temperature-regulated, pressure water circulation system;
- Starter: 24V-5.0kW;
- Radiator: fin type aluminum plate core;
- Air cleaner: Dry type system with main filter element, safety element and resistance indicator;
- Throttle: Grip type hand throttle, electrically-controlled;
- Fuel filter: Replaceable paper element;
- Batteries: Two 12V×180Ah capacity batteries, connected in series;
- Fuel tank capacity: 1050L.

Electrical Control System

- Self-developed SYIC-II integrated control system is adopted with higher integration, precise operation and reliable quality;
- Control system consists of power system, engine system, main control system, LMI system, auxiliary system and safety monitoring system. CAN BUS is used for data communication between controller, monitor and the engine;
- Monitor: the working parameters and status are shown on the monitor, such as the engine speed, fuel volume, engine oil pressure, servo pressure, wind speed, engine working hours, LMI data, ground bearing pressure, control handle function, alarm information, failure self-diagnosis;
- Remote Monitoring System: newly developed APP can collect equipment status at any time anywhere. Online functions such as smart maintenance reminder, failure alarm, construction data feeding, one-click service request, equipment health management are available, which makes the information more transparent and instant;
- Remote Control System: This is offered as optional function, all main mechanisms and assisting cylinders can be controlled through remote control box as an optional feature. The monitor can show data of engine and LMI to ensure smarter, easier and safer operation.

Hydraulic System

- Main pumps: open variable displacement piston pumps are adopted to provide oil supply for main actuators of main machine;
- Gear pump: one dual-gear pump for oil radiator motor and A/C motor control circuit;
- Control: main pump adopts electrically proportionate control; winch motor adopts limitless adjustable piston motor of variable displacement. The operating components are electrical control handle, one dual-travel electrically-controlled pedal to control various actuators proportionally;
- Way of cooling: air-cooled heat exchanger, fan core and multi-stage cooling;
- Filter: large flow, high precision filter, with bypass valve and transmitter, which can remind the user to replace the filter element in time;
- Max. pressure of system:
Main/aux. load hoist, boom/jib hoist, swing and travel system: 33Mpa;
Servo pressure: 3.5 MPa;
Hydraulic Tank Capacity: 500L .



Product Specification

Main and Aux. Load Hoist Mechanism

- Pump and motor: speed regulation through dual displacement pump. Winch counterbalance valve and anti-sliding technology on hook make sure the load lifting and lowering steadily;
- Winch brake: normally-closed, embedded, wet, spring-loaded disc brake is adopted to brake with spring force and release with oil pressure;
- A variable hydraulic motor drives the planetary gear reducer to control the load lifting and lowering of main hoist winches. A good inching performance is provided. The high-speed mode can realize main and aux. load lifting faster;
- Variable hydraulic motor can realize max. winch speed through automatic adjustment based on electricity flow;
- Choose high-quality spin-resistance wire rope to make sure high safety and longer service life;
- Fold-line machined drum provides high precision and good reliability, making sure the wire rope won't get messy;
- Choose the wire rope lug to make wire rope assembly easier and faster.

Main Load Hoist Mechanism	Rope speed on the outermost work layer	0~120m/min
	Wire rope diameter	26mm
	Wire rope length for main load hoist winch	550m
	Rated single line pull	15t
Auxiliary Load Hoist Mechanism	Rope speed on the outermost work layer	0~120m/min
	Wire rope diameter	26mm
	Wire rope length for aux. load hoist winch	390m
	Rated single line pull	15t

Boom/Jib/Hoist Mechanism

- Including: boom hoist mechanisms, jib hoist mechanism;
- Drums with folded-line grooves are adopted for all luffing devices. Hydraulic motor drives the planetary gear reducer to realize multiple composite actions and it is equipped with good inching performance.

Boom Hoist Mechanism	Rope speed on the outermost work layer	130m/min
	Wire rope diameter	28mm
	Wire rope length of boom hoist winch	288m
Jib Hoist Mechanism	Rope speed on the outermost work layer	100m/min
	Wire rope diameter	20mm
	Wire rope length of jib luffing winch	410m

Swing Mechanism

- Swing brake adopts wet, spring loaded, normally-closed brake, and braking through spring force;
- Swing system adopts integrated swing buffer valve and free slipping function, making sure the start and control is steady, and providing excellent inching function;
- Unique swing buffer design makes the braking more stable;
- Swing drive: external engaged swing drive with 360° swing range, and the max. swing speed is 1.0r/min. The max. drive pressure can reach 29MPa;
- Swing lock: cylinder lock can ensure the upperworks locked securely at four directions after work or during transport;
- Swing ring: three-row roller bearing.

Product Specification



Cab and Control

- Novel operator's cab with fashionable profile, nice interior and large window glass, which can tilt up by 20° to provide panorama view. There are low and high-beam lights, back-view mirror, heater and A/C, radio and other functions. The layout of seat, handles, control buttons are designed with ergonomic principles to make operation more comfortable;
- Cab layout: Integrated 10.4-inch touch screen, two monitors, standard vibration handle, and man-machine interaction interface are more improved;
- Armrest box: on the left and right armrest box are control handles, electrical switches, emergent stop and ignition switch. The armrest box can be adjusted along with the seat;
- Seat: multi-way and multi-level floating adjustable seat with unload switch;
- A/C: cool and heat air; optimized air channels and vents;
- Multiple cameras can present on the monitor at the same time to realize backing video, real-time monitoring of hook working, travel area, winch and wire rope reeving conditions.

Counterweight

- The assembled counterweight blocks are easy for self-assembly and transportation;
- The stacking mode of counterweight tray and blocks is used for easy assembly, disassembly and transportation;

Name	Quantity	Length	Width	Height	Unit weight
Center counterweight	2	5.48	1.72	0.598	20
Rear Counterweight	16	2.39	1.96	0.49	6
Rear counterweight tray	1	7.96	1.96	0.69	16

Upperworks

- High-strength steel weld framework, with no torsion or deformation. The parts are laid out in the way that is easier for maintenance and service.

Travel drive

- Independent travel drive device is used for each side of crawler. Straight line traveling and steering is driven by travel motor through reducer and drive wheel. Automatic machine direction switch is available;
- The travel system is configured with low and high speed options, which can travel as fast as 1.0km/h.
- Gradeability: 30%.

Travel brake

- Wet, spring loaded, normally-closed brake, braking through spring force and releasing through oil pressure;

Crawler tightening

- The jack is used to push the guide wheel and insert the shim to adjust crawler tension.

Steering system

- The machine is capable of turning with one crawler or in pivot.

Track pad

- High strength alloy cast steel track pad ensure long service life. They are 1200mm wide with a total of 75pads x 2.

Track roller

- Maintenance-free track rollers are used.

Jack cylinder

- Jack cylinders are designed to facilitate crawlers removal during job-site transport.



Product Specification

Boom

- The boom is a spatial lattice structure with equal section areas for inserts and tapered section areas for both ends. With tubes welded together, and boom tip and root strengthened with steel plates, it can better transfer the load;
- The length of the boom ranges from 20m base boom to the maximum length 86m;
- Composition: boom base 10m x1, transitional insert 6m x1, boom top 1m x1, boom insert 3m x1, boom insert 6m x1, boom insert 12m x5;
- Boom length varies from basic boom of 20m to max. length of 86m, increasing every 3m. The extension jib is mounted on the boom top.

Fixed Jib

- The fixed jib is a spatial lattice structure with equal section areas for inserts and tapered section areas for both ends. With tubes welded together, and jib tip and root strengthened with steel plates, it can better transfer the load;
- Fixed jib length varies from 13m to 42m, increasing by every 6m;
- Composition: jib top 6.5m, jib base 6.5m, jib insert 6m x1, 11.5m x2;
- The fixed jib length available is 13m, 19m, 24.5m, 30.5m, 36m and 42m; which can be mounted on boom length from 29m to 62m.

Luffing Jib

- The luffing jib is a spatial lattice structure with equal section areas for inserts and tapered section areas for both ends. With tubes welded together, and jib tip and root strengthened with steel plates, it can better transfer the load;
- Luffing jib length varies from 21m to 63m, increasing by every 3m;
- Composition: jib top 6m, jib base 6m, jib insert 3m x1, 6m x2, 12m x3;
- The fixed jib length available is 21m, 24m, 27m, 30m, 33m, 36m, 39m, 42m, 45m, 48m, 51m, 54m, 57m, 60m, 63m; which can be mounted on boom length from 26m to 62m.

Boom tip sheave block

- Weld structure, connected to the boom through pin, used for aux. hook.

Hook

- There are six types of hook blocks are available:

Name of Hook Block	Max. load weight	QTY	No. of sheaves	Unit weight (t)
260t hook block	260	1	9	5.2
160t hook block	160	1	5	3.2
100t hook block	100	1	3	2.3
50t hook block	50	1	1	1.7
16t ball hook	16	1	None	0.9

Note: The above-mentioned is full up configurations, and the actual configurations are based on the order.

Safety Devices



Assembly/Work Mode Control Switch

- Under the assembly mode, over-hoist limit switch, crane boom limit device and load moment limiter do not work, so as to facilitate the installation of crane;
- All safety limit devices work in the work mode.

Emergency Stop

- In emergent situation, this button is pressed down to cut off the power supply of whole machine and all actions stop.

Load Moment Limiter (LMI)

- It is an independent computerized safety control system. LMI can automatically detect the load weight, work radius and boom angle, and present on the display the rated load, actual load, work radius and boom angle. In normal operation, the LMI can make a judgment and cut off automatically if the crane moves towards dangerous direction. It can also perform as a black box to record the lifting information;
- It is composed of monitor, angle sensor and force sensor and other parts.

Over-hoist Limit Switch of Main/Auxiliary Hooks

- Over-hoist protection device comprises of limit switch and weight on boom top, which prevents the hook lifting up too much;
- When the hook lifts up to the limit height, the limit switch activates, buzzer sends alarm, failure indicator light starts to flash, and the hook hoisting action is cut off automatically.

Over-release Limit Switch of Main/Auxiliary Hooks

- It is comprised of activator in the drum and proximity switch to prevent over release of wire rope. When the rope is paid out close to the last three wraps, the limit switch acts, and the system sends alarm through buzzer and show the alarm on the instrument panel, automatically cutting off the winch action.

Function Lock Lever

- If the function lock level is not in work position, all the other handles won't work, which prevents any mis-operation caused by accidental collision.

Boom Hoist Drum Lock

- Pawl lock is used on boom hoist winch, which needs to unlock by switch before operation, in order to prevent mis-operation of handles and ensure safety during nonwork time.

Swing Lock Device

- Swing Lock can lock the machine at four positions, front and back, left and right.

Boom Limit Device

- When the boom elevation angle reaches the max. set limit, the buzzer sounds and boom action cut off. This protection is two-stage control ensured by both LML system and travel switch.

Back-stop Device

- The boom adopts back stop oil cylinder structure, the larger the compression is, the larger the back stop force. The maximum back-stop cylinder is 38t;
- There is a pair of mechanical back-stop device for luffing jib rear strut to prevent mast backing and tension rear strut pendant;
- When the boom to jib angle approaches the smallest angle, there is pneumatic back-stop device to prevent back tipping. The maximum back-stop force is 50t.

Boom Angle Indicator

- Pendulum angle indicator is fixed on the side of boom base close to the cab, so as to provide convenience to the operator.

Hook Latch

- The hook is provided with a baffle to prevent wire rope from falling off.



Safety Devices

Lightning Protection Device

- It is offered as an optional feature, which includes the grounding device that can effectively protect the electric system elements and workers from lightning.

Tri-color Load Indicator

- The load indication light has three colors, green, yellow and red, and the real time load status is presented on the display. When the actual load is smaller than 90% of rated load, the green light is on;
- When the actual load is larger than 90% and smaller than 100%, the yellow light is on, the alarm light flashes and sends out intermittent sirens;
- When the actual load reaches 100% of rated load, the red light is on, the alarm light flashes and sends out continuous sirens;
- When the actual load reaches 102% of rated load, the system will automatically cut off the crane operation in dangerous trend.

Audio-visual Alarm

- When the engine is working, the light flashes; when the machine is traveling or swinging, it sends out sirens.

Swing Indicator Light

- The swing indicator light flashes during traveling or swing.

Illuminating Light

- The machine is equipped with the low beam light and high beam light at the front of the cab, illumination light at cab, and other night lights, boom lights to improve the visibility during construction.

Camera

- Set on the handrail at the front of right sheet metal, so as to monitor the rear part of machine.

Pharos

- Pharos is mounted on the top of boom/jib to indicate the height.

Anemometer

- It is mounted on the top of boom/jib, and displayed on the monitor in the cab.

Electronic Level Indicator

- It displays the tipping angle of crane on the monitor in real time, protecting the machine from dangerous situation.

Seat Interlock

- Put down the function lock lever on the left side of cab seat or if the operator leaves the seat, all control levers will be de-activated to prevent any mis-operation due to accidental collision.

Engine Power Limit Load Adjustment and Stalling Protection

- The controller monitors the engine power to prevent engine getting stuck and stalling.

Engine Status Monitoring

- The engine status will be presented, such as engine coolant temperature, fuel volume, total work hours, engine oil pressure, engine speed, battery charging, voltage.

Monitor System

- Standard remote monitoring system provides functions such as GPS location, GPRS data transfer, machine operation status inquiry and statistics, operation data monitoring and analysis, remote diagnosis of failures.



SCC2800A
SANY CRAWLER CRANE
280 TONS LIFTING CAPACITY

QUALITY CHANGES THE WORLD

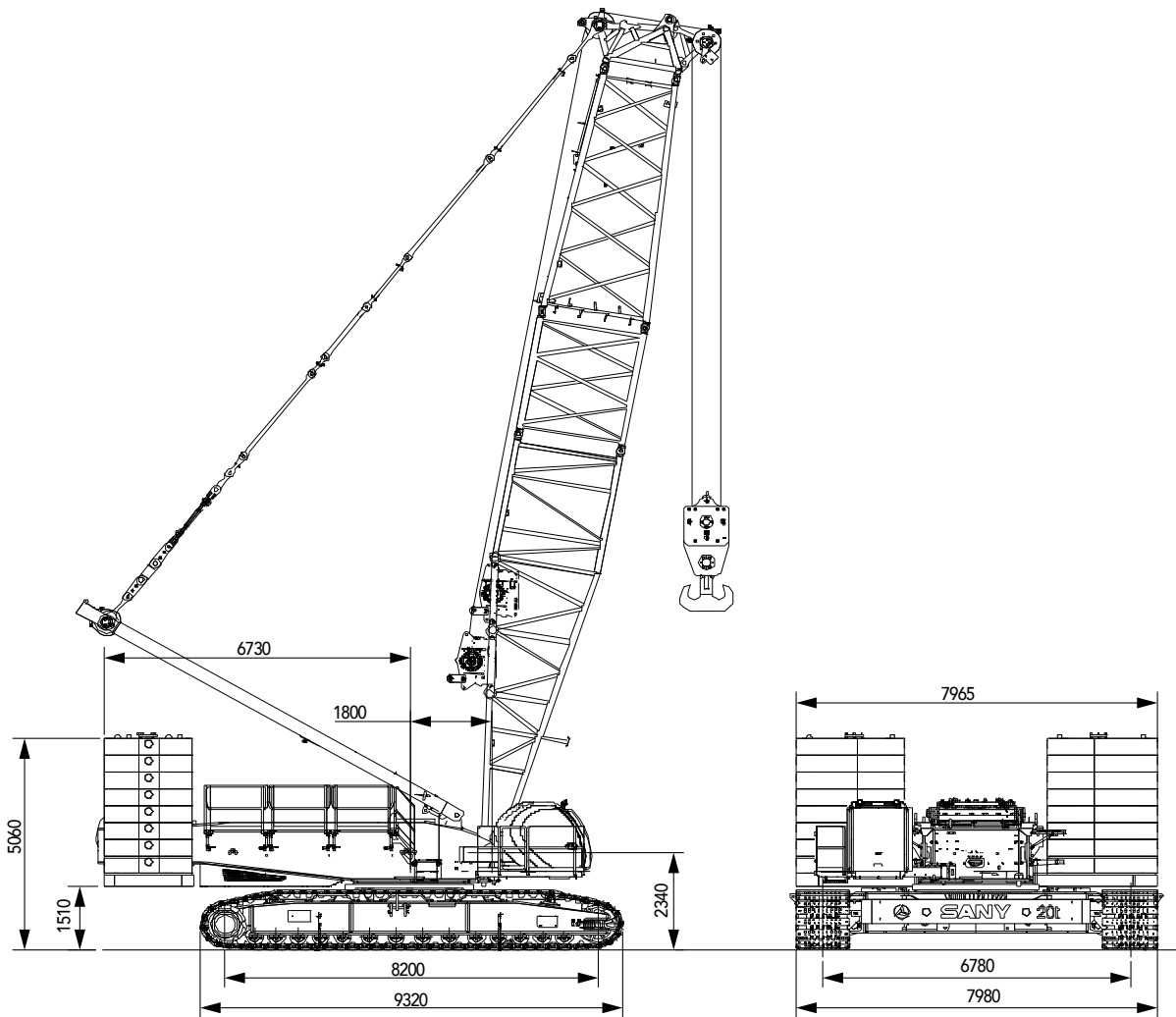
Technical Parameters

- Page 10 Major Performance Specifications
- Page 11 Outline Dimension
- Page 12 Transport Plan
- Page 17 Self-assembly plan

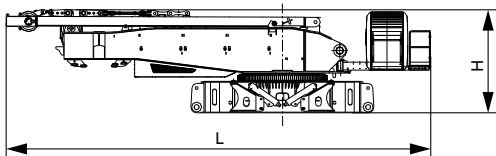
> 10

Major Performance Specifications

Major Performance & Specifications of SCC2800A			
Performance Indicators		Unit	Parameter
H Configuration	Max. rated lifting capacity	t	280
	Max. rated lifting capacity	t·m	1620
	Boom length	m	20~86
	Boom angle	°	30~85
FJ Configuration	Longest boom + longest fixed jib	m	62+42
	Boom to jib angle	°	10, 30
Heavy Fixed Jib	Boom + fixed jib (Shield Application)	m	20(23)+7
	Boom to jib angle	°	22
Luffing jib	Longest boom + longest luffing jib	m	62+63
	Boom luffing angle	°	65~85
Speed	Speed of single rope of the main/aux. load hoist (outermost work layer)	m/min	0~120
	Boom hoist winch speed (outermost layer)	m/min	0~130
	Jib hoist winch speed (outermost layer)	m/min	0~100
	Slewing speed	rpm	0~1.0
	Travel speed	km/h	0~1.2/0~0.53 (high and low)
	Gradeability	%	30
Engine	Output power	kW	242
	Rated speed	rpm	2100
Transport	Max. transport weight of single part (with main and aux. hoist winches)	t	45
	Transport dimension (L × W × H)	mm	13320×3000×3200
	Average ground pressure	MPa	0.14

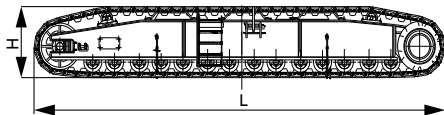
Outline Dimension

Transport Dimension



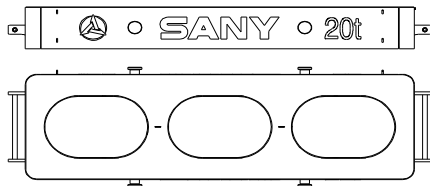
Basic Machine ×1

Length(L)	13.32m
Width(W)	3.00m
Height(H)	3.20m
Weight	45.0t



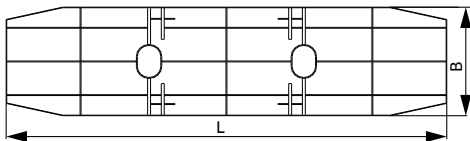
Crawler ×2

Length(L)	9.32m
Width(W)	1.57m
Height(H)	1.42m
Weight	22.2t



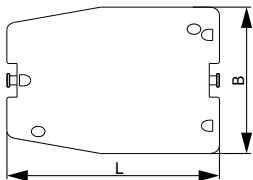
Carbody counterweight ×2

Length(L)	5.48m
Width(W)	1.72m
Height(H)	0.58m
Weight	20.0t



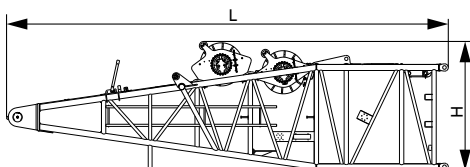
Rear counterweight tray ×1

Length(L)	7.96m
Width(W)	1.96m
Height(H)	0.68m
Weight	16.0t



6T counterweight block ×16

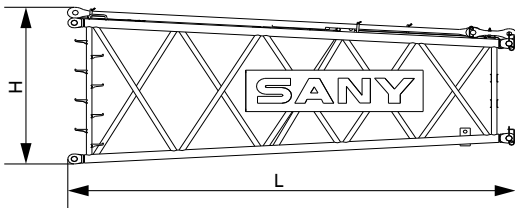
Length(L)	2.40m
Width(W)	1.96m
Height(H)	0.50m
Weight	6.0t



Boom Base (with main/aux. winch) ×1

Length(L)	10.35m
Width(W)	2.60m
Height(H)	2.99m
Weight	14.8t

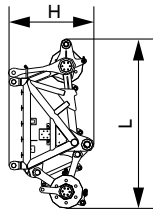
Transport Dimension



6m tapered boom insert

×1

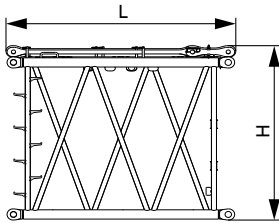
Length(L)	6.20m
Width(W)	2.65m
Height(H)	2.66m
Weight	2.1t



Boom tip (with pulley block)

×1

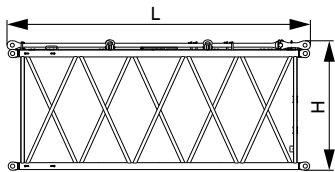
Length(L)	3.24m
Width(W)	2.07m
Height(H)	1.62m
Weight	3.1t



3m boom insert

×1

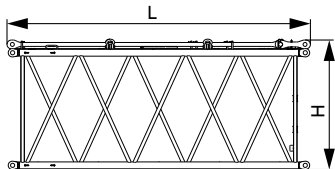
Length(L)	3.18m
Width(W)	2.65m
Height(H)	2.66m
Weight	1.2t



6m boom insert

×1

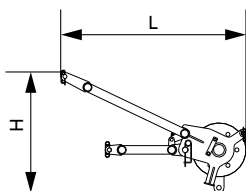
Length(L)	6.18m
Width(W)	2.65m
Height(H)	2.66m
Weight	1.8t



12m boom insert

×5

Length(L)	12.18m
Width(W)	2.65m
Height(H)	2.66m
Weight	3.17t

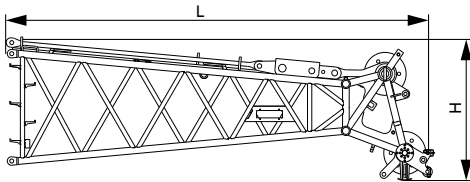


Boom extension jib

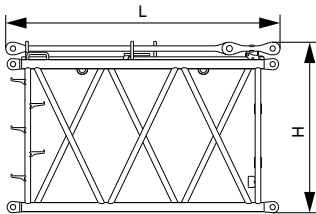
×1

Length(L)	2.20m
Width(W)	0.90m
Height(H)	1.44m
Weight	0.35t

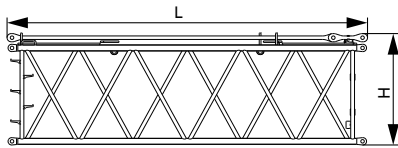
Transport Dimension



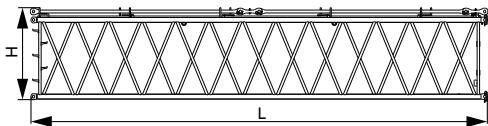
Luffing jib top ×1	
Length(L)	6.48m
Width(W)	2.21m
Height(H)	2.14m
Weight	2.18t



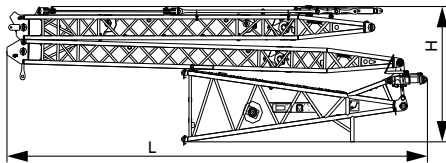
3m luffing jib insert ×1	
Length(L)	3.18m
Width(W)	2.21m
Height(H)	1.91m
Weight	0.65t



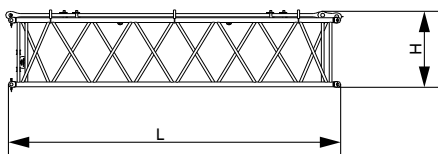
6m luffing jib insert ×2	
Length(L)	6.18m
Width(W)	2.21m
Height(H)	1.91m
Weight	1.1t



12m luffing jib insert ×3	
Length(L)	12.18m
Width(W)	2.21m
Height(H)	1.91m
Weight	2.03t

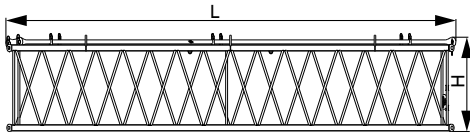


Luffing jib base, front and rear struts ×1	
Length(L)	11.50m
Width(W)	2.21m
Height(H)	3.26m
Weight	6.11t



6m fixed jib insert ×1	
Length(L)	6.11m
Width(W)	1.50m
Height(H)	1.42m
Weight	0.77t

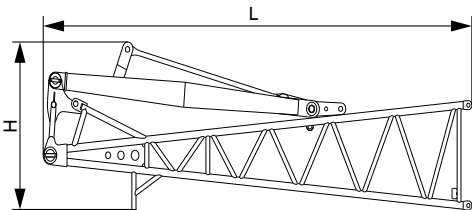
Transport Dimension



11.5m fixed jib insert

×2

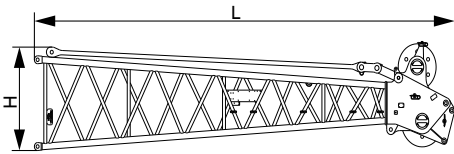
Length(L)	11.67m
Width(W)	1.50m
Height(H)	1.42m
Weight	1.32t



Fixed jib base and strut

×1

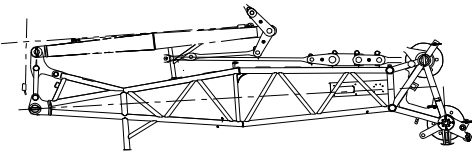
Length(L)	6.70m
Width(W)	1.43m
Height(H)	2.00m
Weight	1.8t



Fixed jib top

×1

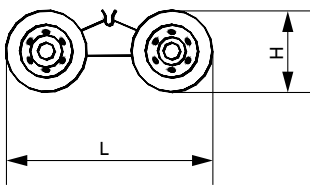
Length(L)	7.10m
Width(W)	1.44m
Height(H)	1.43m
Weight	1.68t



7m short jib

×1

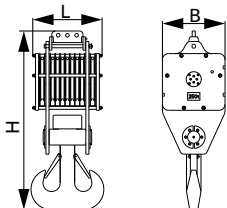
Length(L)	7.57m
Width(W)	2.10m
Height(H)	2.20m
Weight	3.8t



trolley

×1

Length(L)	2.56m
Width(W)	1.74m
Height(H)	1.00m
Weight	1.0t

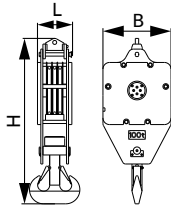


260t hook

×1

Length(L)	1.04m
Width(W)	1.02m
Height(H)	2.93m
Weight	5.2t

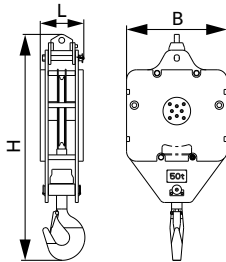
Transport Dimension



100t hook

×1

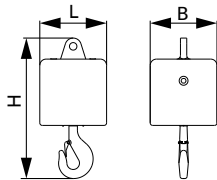
Length(L)	0.51m
Width(W)	1.02m
Height(H)	2.48m
Weight	2.3t



50t hook

×1

Length(L)	0.45m
Width(W)	1.00m
Height(H)	2.30m
Weight	1.7t



16t hook

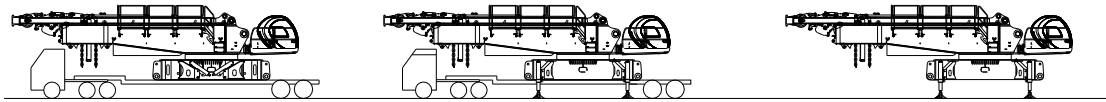
×1

Length(L)	0.53m
Width(W)	0.53m
Height(H)	1.10m
Weight	0.9t

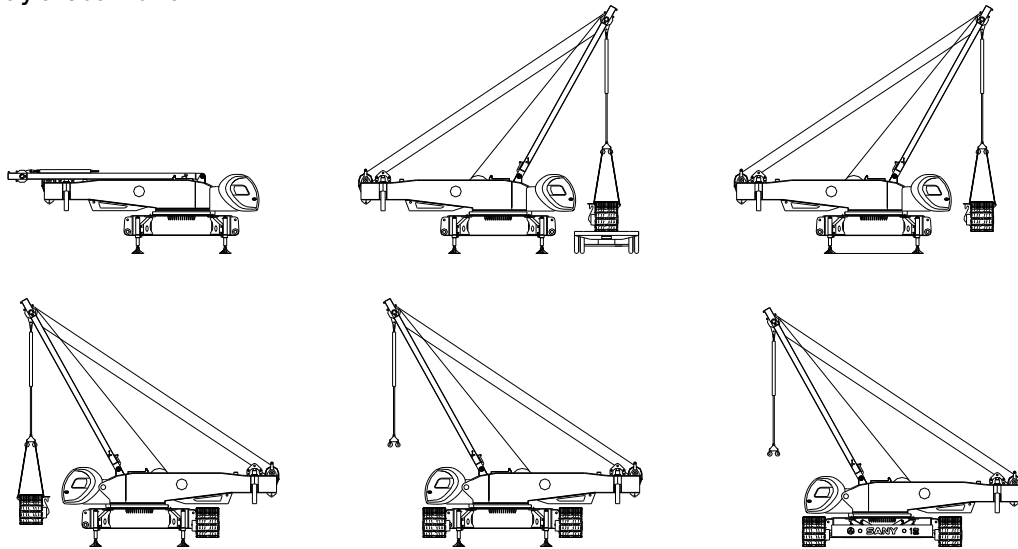
- 1.The transport dimensions of each part in the table are schematic, not proportional to the real parts. The dimensions are designed value without package considered.
- 2.Weight is designed value that the actual manufactured part may deviate a little.
- 3.The dimensions and weight of each part may change due to product upgrading. The final values are subject to the new product

Self-assembly plan

1) Self-assembly of basic machine

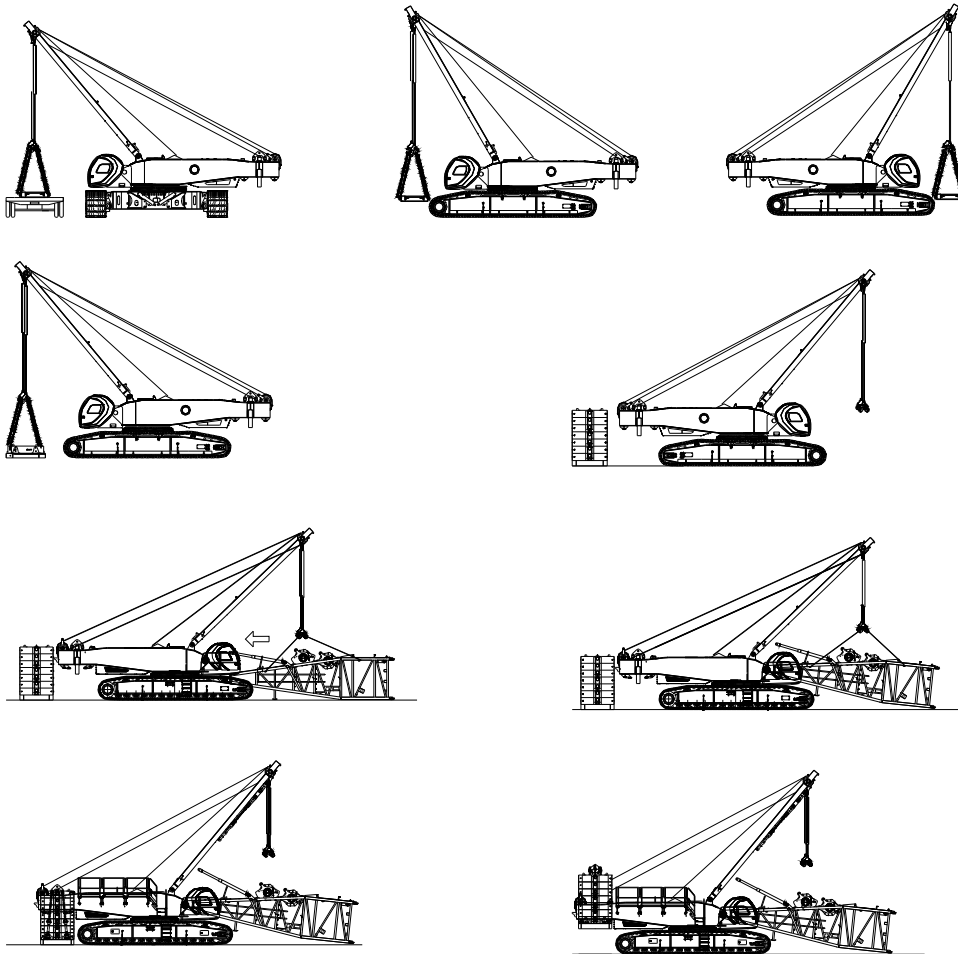


2) Self-assembly of track frame

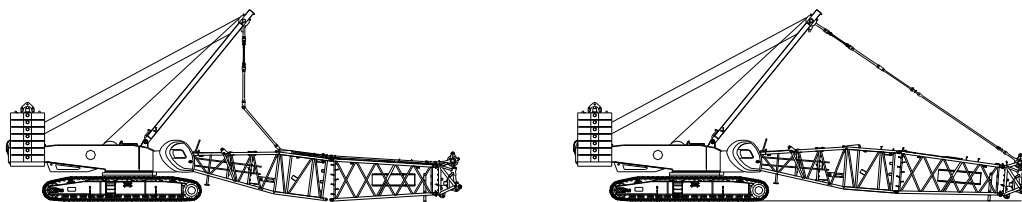


Self-assembly plan

3) Self-assembly of counterweight and boom base

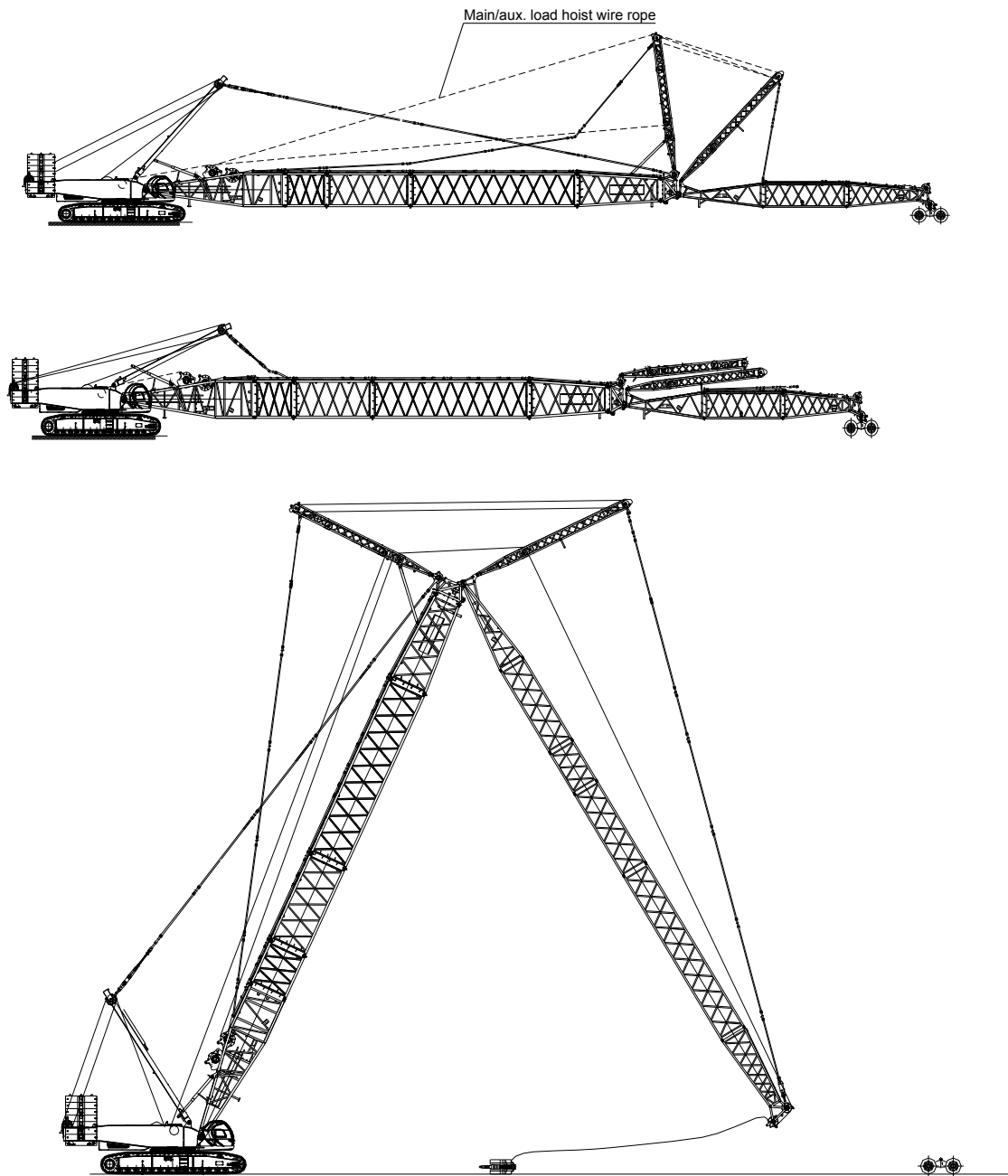


4) Schematics of boom assembly



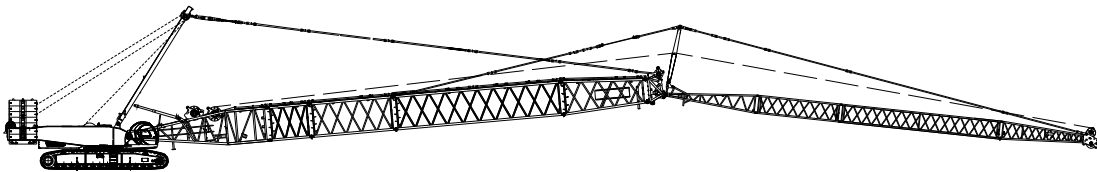
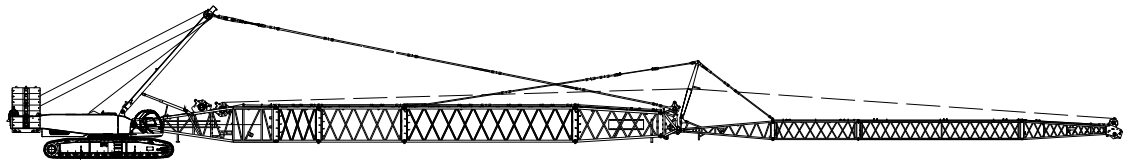
Self-assembly plan

5) Luffing jib assembly



Self-assembly plan

6) Fixed jib assembly



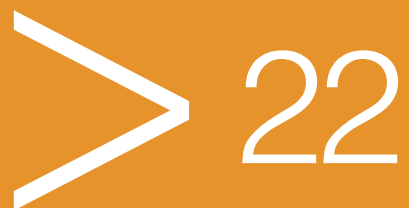


SCC2800A
SANY CRAWLER CRANE
280 TONS LIFTING CAPACITY

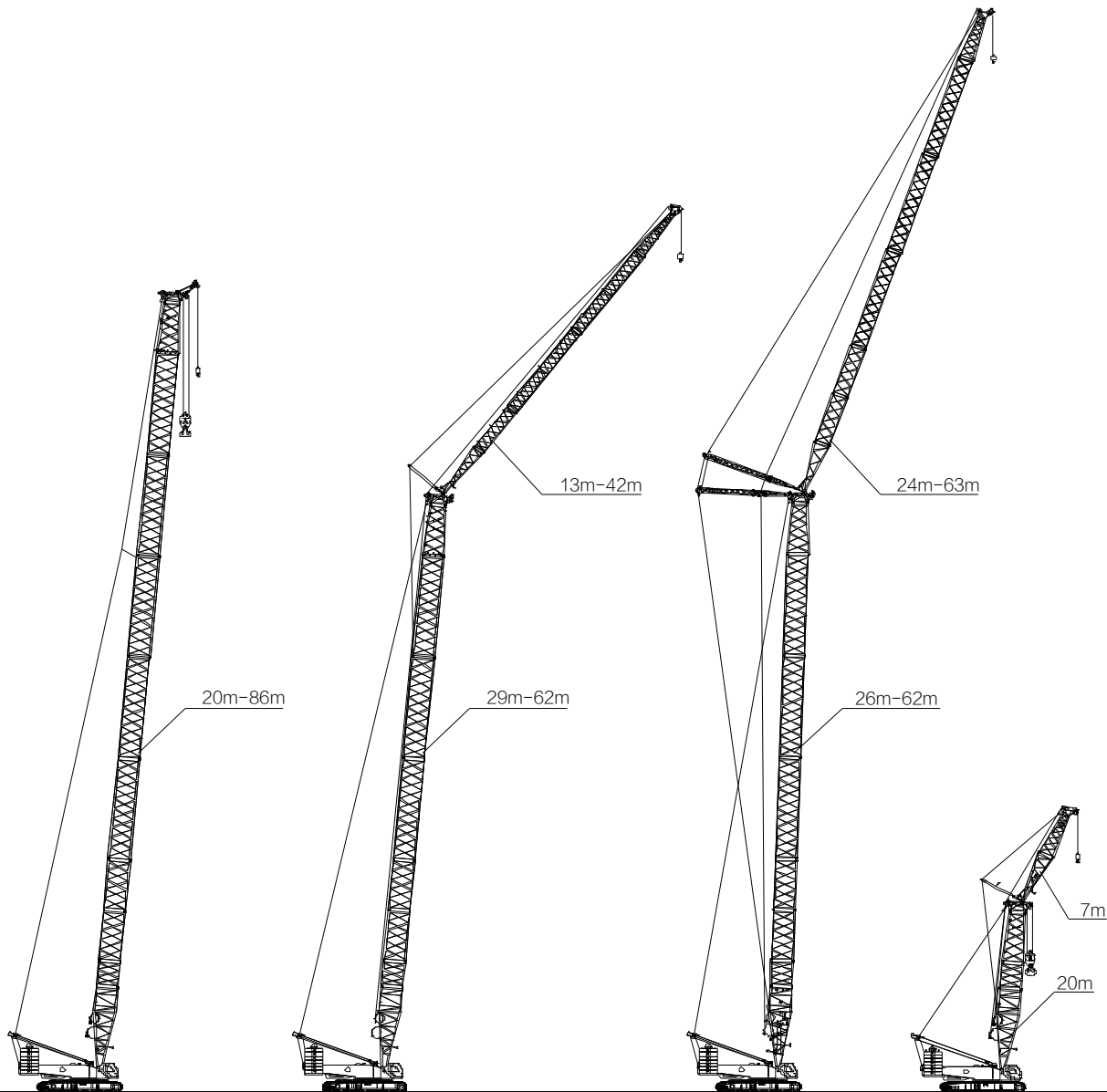
QUALITY CHANGES THE WORLD

Cofigurations

- Page 23 Configurations
- Page 24 H Configuration
- Page 27 FJ Configuration
- Page 33 LJ Configuration
- Page 39 FJh Configuration



Boom combination



H Configuration
Max. lifting capacity: 260t x 5m
Longest boom: 86m

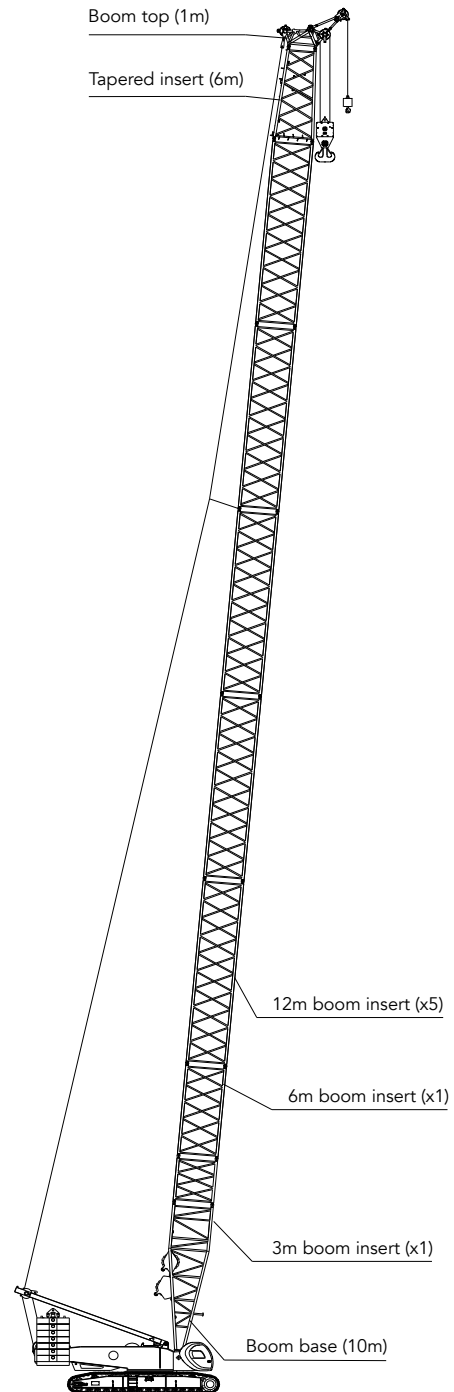
FJ Configuration
Max. lifting capacity: 10m x 85.6t
longest boom + longest jib: 62m + 42m

LJ Configuration
Max. lifting capacity: 12m x 103t
longest boom + longest jib: 62m + 63m

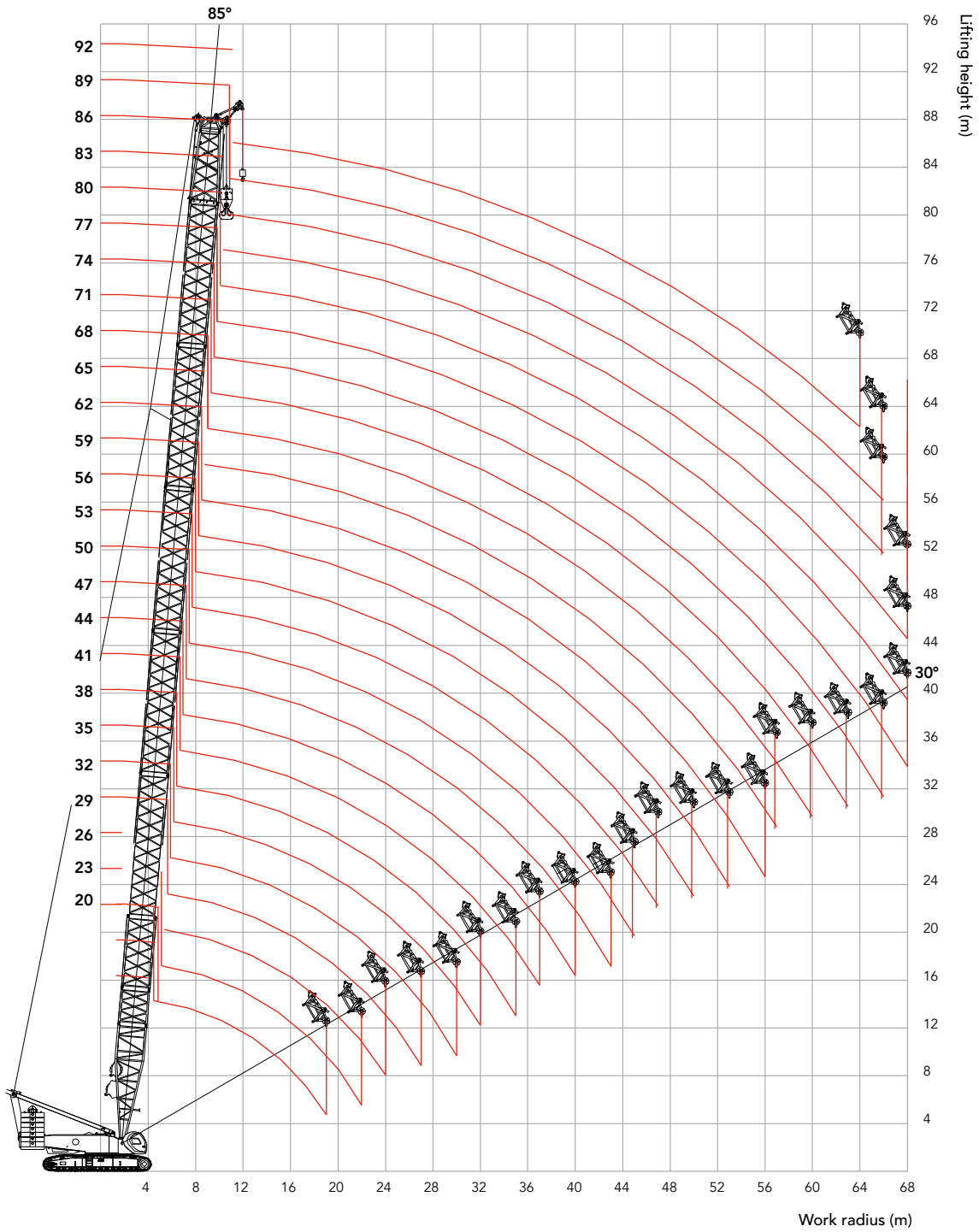
FJh Configuration
Lifting capacity:
Aux. hook capacity: 8m x 105t
Main hook capacity: 10m x 160t
Boom combination: 20m + 7m

H Boom Combination

H Boom Combination			
Boom length (m)	Inserts		
	3 m	6 m	12m
20	1	-	-
23	-	1	-
26	1	1	-
29	-	-	1
32	1	-	1
35	-	1	1
38	1	1	1
41	-	-	2
44	1	-	2
47	-	1	2
50	1	1	2
53	-	-	3
56	1	-	3
59	-	1	3
62	1	1	3
65	-	-	4
68	1	-	4
71	-	1	4
74	1	1	4
77	-	-	5
80	1	-	5
83	-	1	5
86	1	1	5



H Working Radius



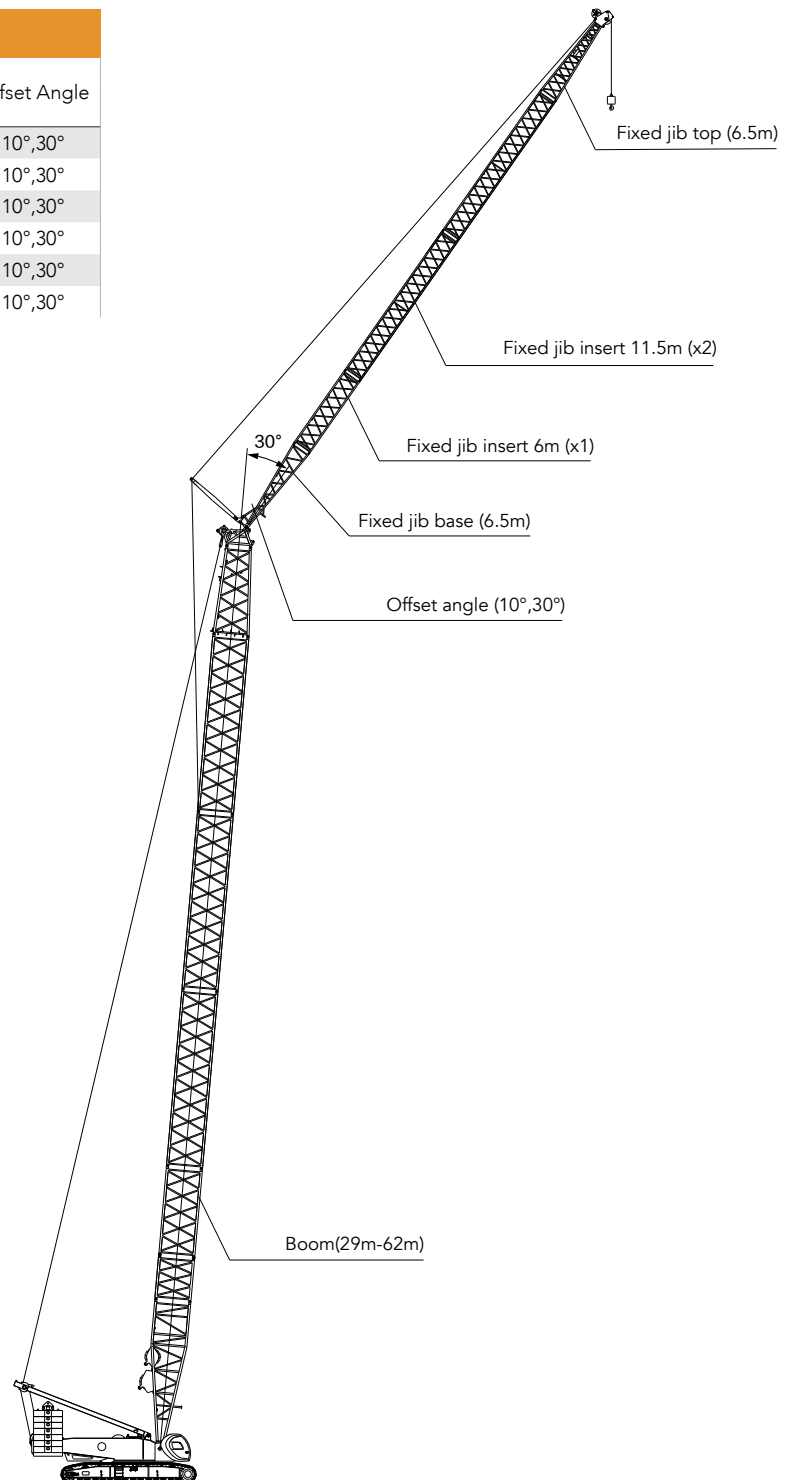
H Load Chart

- 1.The transport dimensions of each part in the table are schematic, not proportional to the real parts. The dimensions are designed value without package considered.
- 2.Weight is designed value that the actual manufactured part may deviate a little.
- 3.The dimensions and weight of each part may change due to product upgrading. The final values are subject to the new product

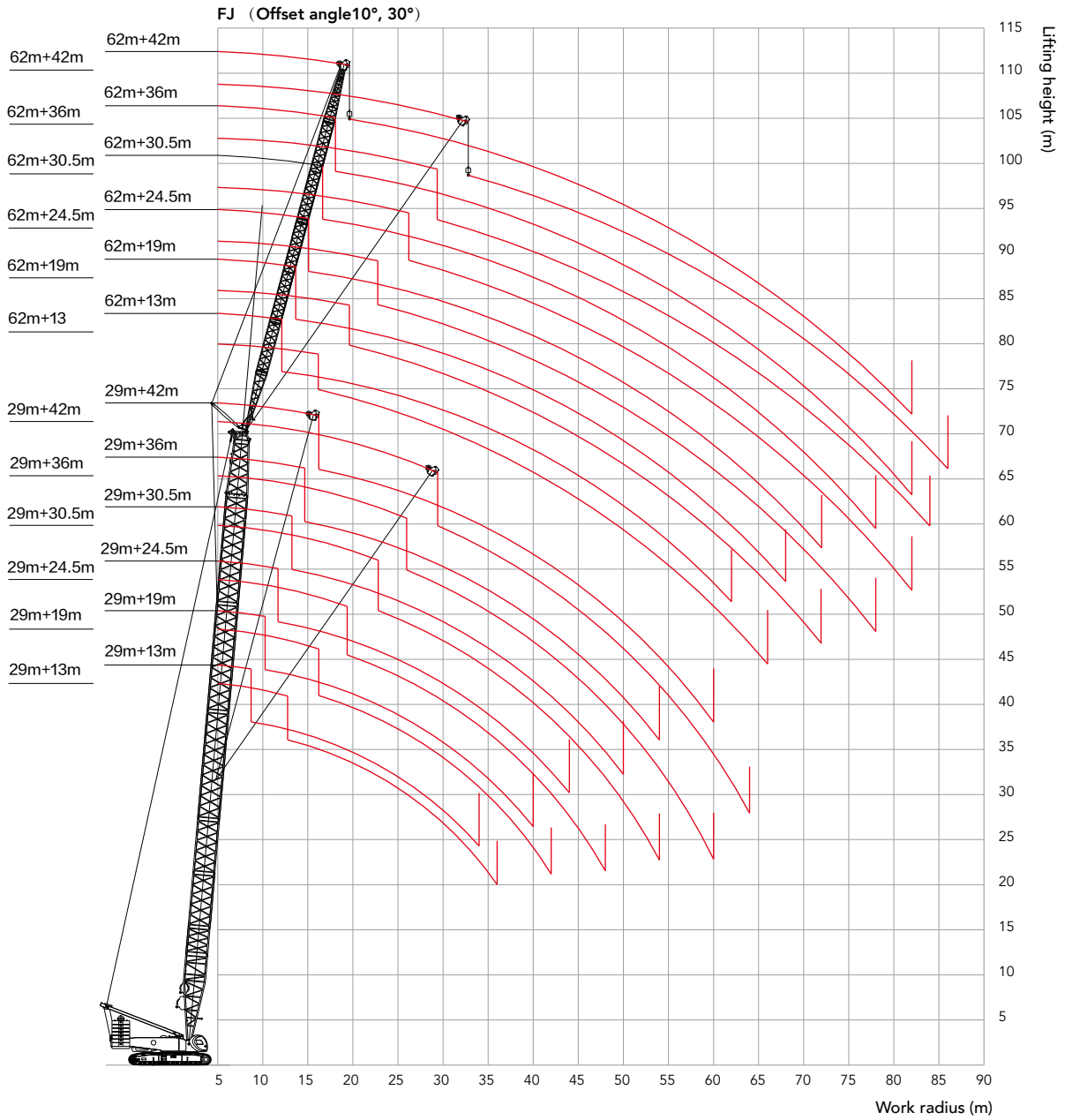
SCC2800A Crawler Crane – H _112+40																								
		Boom length 20-86m										Rear counterweight 112t					Carbody counterweight 40t							
BL R	20	23	26	29	32	35	38	41	44	47	50	53	56	59	62	65	68	71	74	77	80	83	86	BL R
5	280																							5
6	252	245	237	232	220																			6
7	219	218	216	215	212	205	195	186	177															7
8	194	193	191	191	188	188	187	182	173	165	157	149	141											8
9	173	172	171	171	168	169	167	167	165	161	153	146	139	132	125	118								9
10	162	156	154	155	152	153	152	151	150	149	148	143	136	129	123	116	109	98.3	91.2	82.3				10
11	143	142	141	141	138	139	138	138	137	136	135	132	130	127	121	115	108	97.7	89.6	80.8	78.3	69.4	65.8	11
12	131	131	129	130	127	128	127	127	126	124	122	120	118	116	114	112	107	96	88.1	79.4	77.9	68.9	65.6	12
14	108	108	107	109	106	109	108	107	105	104	102	101	99.3	97.7	96.1	94.8	93.2	91.7	85	76.6	77	68.3	64.7	14
16	89.2	89.8	88.9	90.6	87.7	90.6	90.5	90.7	90.4	89	87.6	86.6	85.2	83.9	82.6	81.5	80.2	79	77.7	73.9	75.5	67.8	64.2	16
18	75.3	75.9	75.1	76.8	73.9	76.8	76.7	76.9	76.7	76.6	76.2	75.4	74.2	73.2	72	71.2	70	69	67.9	67	66	64.8	63	18
20		65.4	64.6	66.3	63.4	66.3	66.1	66.4	66.2	66	65.8	65.9	65.5	64.6	63.6	62.8	61.9	60.9	60	59.2	58.3	57.3	56.4	20
22		57	56.3	58	55.1	58	57.9	58.1	57.9	57.8	57.5	57.6	57.3	57.1	56.6	56	55.1	54.3	53.4	52.8	51.9	51	50.2	22
24			49.5	51.3	48.4	51.3	51.2	51.4	51.2	51.1	50.8	50.9	50.6	50.4	50.1	50.1	49.5	48.7	47.9	47.3	46.5	45.7	45	24
26				45.8	42.9	45.8	45.7	45.9	45.7	45.6	45.3	45.4	45.1	44.9	44.6	44.6	44.3	44	43.2	42.7	42	41.2	40.5	26
28					38.3	41.2	41.1	41.3	41.1	41	40.7	40.7	40.5	40.3	40	39.9	39.6	39.4	39.1	38.7	38	37.3	36.7	28
30					34.3	37.3	37.1	37.4	37.2	37	36.8	36.8	36.5	36.3	36	36	35.7	35.4	35.1	35	34.6	33.8	33.3	30
32						33.8	33.7	34	33.8	33.6	33.4	33.4	33.2	32.9	32.6	32.6	32.3	32	31.7	31.6	31.3	30.8	30.3	32
34							30.8	31	30.8	30.7	30.4	30.5	30.2	30	29.7	29.6	29.3	29.1	28.7	28.6	28.3	27.9	27.7	34
36								28.4	28.2	28.1	27.8	27.9	27.6	27.4	27.1	27	26.7	26.5	26.1	26	25.7	25.3	25.1	36
38									25.9	25.8	25.5	25.6	25.3	25.1	24.8	24.7	24.4	24.2	23.8	23.7	23.4	23	22.8	38
40									23.8	23.7	23.5	23.6	23.3	23.1	22.7	22.7	22.4	22.1	21.8	21.7	21.3	21	20.7	40
42										21.9	21.8	21.8	21.6	21.4	21.0	21.0	20.7	20.4	20.1	20.0	19.6	19.2	19.0	42
44											20	20	19.8	19.6	19.2	19.2	18.9	18.6	18.3	18.2	17.8	17.4	17.2	44
46												18.6	18.4	18.2	17.8	17.8	17.5	17.2	16.9	16.8	16.4	16.0	15.8	46
48													17.1	16.9	16.7	16.4	16.3	16	15.7	15.4	15.3	14.9	14.6	48
50														15.6	15.5	15.2	15.1	14.8	14.5	14.2	14.1	13.7	13.4	50
52															14.2	13.9	13.9	13.6	13.3	13	12.9	12.5	12.1	52
54																12.9	12.9	12.6	12.3	12.0	11.9	11.5	11.1	54
56																	11.8	11.8	11.5	11.3	10.9	10.8	10.5	56
58																		10.9	10.6	10.4	10.0	9.9	9.6	58
60																			9.7	9.5	9.1	9	8.7	60
62																					8.4	8.3	8.0	62
64																						7.6	7.5	64
66																						6.8	6.5	66
68																							5.8	68
70																							4.8	70
72																							4.2	72
74																							3.4	74

FJ Configuration

FJ Configuration				
Jib length (m)	Insert		Boom length(m)	Offset Angle
	6 m	11.5 m		
13	-	-	32~62	10°,30°
19	1	-	32~62	10°,30°
24.5	-	1	32~62	10°,30°
30.5	1	1	32~62	10°,30°
36	-	2	32~62	10°,30°
42	1	2	32~62	10°,30°



FJ Working Radius



Unit: t

FJ Load Chart

Note:

- Actual Lifting Capacity shall deduct the weight of hook blocks, lifting devices, and wire ropes reeving between the hooks and boom top from the rate capacity.
- Rated capacity in the load charts is calculated when the crane is on firm and level ground, and the load lifting is slowly and steadily.

SCC2800A Crawler Crane – FJ (without boom hook, rear counterweight 112t + carbody counterweight 40t) 1/4														
No main hook, jib offset angle 10°														
Boom length (m) R (m)	Jib length (m)	29						32						Boom length(m) Jib length (m) R (m)
		13	19	24.5	30.5	36	42	13	19	24.5	30.5	36	42	
9	85.5													9
10	85.8							85.6						10
12	79.1	70.5						81.5	71.4					12
14	70.8	66.3	59.2	46.2				73.2	67.8	59.7				14
16	63.9	59.6	51.8	42.5	32.7			66.3	61.4	53.4	43.5	32.5		16
18	58.2	54.1	45.5	37.5	31.6	23.2		60.6	55.9	47.4	38.7	31.4	23.3	18
20	53.5	49.6	40.5	33.3	29.1	22.4		55.8	51.4	42.3	34.5	30.0	22.5	20
22	49.5	45.8	36.6	30.3	26.3	21.6		51.2	47.5	38	31	26.9	21.7	22
24	45.5	42.4	33.2	27.3	23.8	20.9		45.2	44.2	34.6	28.4	24.7	21	24
26	40.6	39.1	30.5	25	21.7	19.2		40.3	41.2	31.6	26	22.6	19.8	26
28	36.5	35.8	27.9	23	20.1	17.6		36.2	37	29.2	24	20.7	18	28
30	32.9	33.3	25.9	21.3	18.5	16.2		32.6	33.5	27.1	22.2	19.1	16.8	30
32	29.9	30.7	24.1	19.9	17	15		29.6	30.4	25.2	20.7	17.8	15.5	32
34	27.2	28.1	22.6	18.5	16	14		26.9	27.7	23.5	19.3	16.6	14.4	34
36		25.7	21.2	17.4	14.9	13		24.6	25.4	22.2	18	15.5	13.5	36
38		23.6	19.8	16.2	14	12.1		22.5	23.3	21	17	14.5	12.5	38
40		21.8	18.6	15.3	13.1	11.4		21.5	19.7	16.1	13.8	11.7	11.1	40
42			17.7	14.5	12.3	10.7		19.8	18.6	15.1	13	11.1	11.1	42
44			16.8	13.6	11.6	10			17.7	14.4	12.2	10.5	10.5	44
46				13	11	9.4			16.9	13.6	11.6	9.9	9.9	46
48				12.3	10.5	9			16	13	11	9.4	9.4	48
50				11.8	9.9	8.4				12.4	10.5	8.8	8.8	50
52					9.4	8				11.8	10	8.3	8.3	52
54					9	7.6					9.5	7.9	7.9	54
56						7.2					9	7.6	7.6	56
58						6.9					8.6	7.2	7.2	58
60						6.5						6.9	6.9	60
62												6.5	6.5	62
64														64
66														66
68														68
70														70
72														72
74														74
76														76
78														78

FJ Load Chart

SCC2800A Crawler Crane – FJ (without boom hook, rear counterweight 112t + carbody counterweight 40t) 2/4															
No main hook, jib offset angle 10°															
Boom length (m)		59						62						Boom length (m)	
Jib length (m)		13	19	24.5	30.5	36	42	13	19	24.5	30.5	36	42	Jib length (m)	
R (m)															R (m)
10															10
12															12
14	72.9	62						71.4							14
16	63	61.3	48.7					61.8	58	46.7					16
18	55.2	54.8	48.1	36.4				54	53.7	46.2	35.5				18
20	48.7	48.5	47.5	35.9	27.6			47.7	47.5	45.6	35	27.1			20
22	43.4	43.3	43.2	35.3	27.1	20.4		42.4	42.4	42.3	34.4	26.6	20.2		22
24	38.8	38.8	38.8	34.7	26.5	20		38	38	38	33.9	26.1	19.8		24
26	34.9	35	35.1	33.6	26	19.5		34.1	34.2	34.4	33.3	25.7	19.4		26
28	31.5	31.7	31.9	31.4	25.5	19.1		30.8	31	31.1	31.1	25.2	18.9		28
30	28.6	28.8	29	29	24.6	18.7		27.9	28.1	28.3	28.3	24.7	18.6		30
32	26	26.3	26.5	26.5	23	18.4		25.3	25.6	25.8	25.9	23.6	18.2		32
34	23.7	24	24.2	24.3	21.7	17.9		23	23.3	23.6	23.7	22.3	17.8		34
36	21.6	21.9	22.2	22.3	20.7	17.5		20.9	21.3	21.6	21.7	21	17.5		36
38	19.7	20.1	20.4	20.5	19.4	16.5		19.1	19.4	19.8	19.9	19.9	16.9		38
40	18	18.4	18.7	18.9	18.5	15.6		17.4	17.8	18.1	18.3	18.4	15.9		40
42	16.5	16.9	17.2	17.4	17.5	14.9		15.9	16.3	16.6	16.8	17	15.2		42
44	15.1	15.5	15.8	16	16.2	14		14.5	14.9	15.3	15.4	15.6	14.3		44
46	13.8	14.2	14.6	14.8	14.9	13.3		13.2	13.6	14	14.2	14.4	13.7		46
48	12.6	13	13.4	13.6	13.8	12.7		12	12.4	12.8	13	13.3	13		48
50	11.4	11.9	12.3	12.5	12.7	12.2		10.9	11.3	11.8	12	12.2	12.3		50
52	10.4	10.9	11.3	11.5	11.7	11.6		9.9	10.3	10.8	11	11.2	11.3		52
54	9.4	10	10.4	10.6	10.8	10.9		9	9.4	9.8	10.1	10.3	10.4		54
56	8.5	9.1	9.5	9.7	10	10		8.1	8.5	9	9.2	9.4	9.5		56
58	7.7	8.3	8.7	8.9	9.2	9.2		7.3	7.7	8.1	8.4	8.6	8.7		58
60		7.5	7.9	8.2	8.4	8.5		6.5	6.9	7.4	7.6	7.9	8		60
62		6.7	7.2	7.4	7.7	7.8			6.2	6.7	6.9	7.2	7.3		62
64		6.1	6.5	6.8	7	7.1			5.5	6	6.2	6.5	6.6		64
66			5.9	6.1	6.4	6.5			4.9	5.3	5.6	5.9	6		66
68			5.3	5.5	5.8	5.9				4.7	5	5.3	5.4		68
70				4.9	5.2	5.3				4.2	4.4	4.7	4.8		70
72				4.4	4.7	4.8					3.9	4.2	4.3		72
74				3.9	4.2	4.3					3.4	3.7	3.8		74
76					3.7	3.8					2.9	3.2	3.3		76
78					3.2	3.3						2.7	2.8		78
80						2.9						2.3	2.4		80
82						2.5							2		82
84						2.1							1.6		84

Unit: t

FJ Load Chart

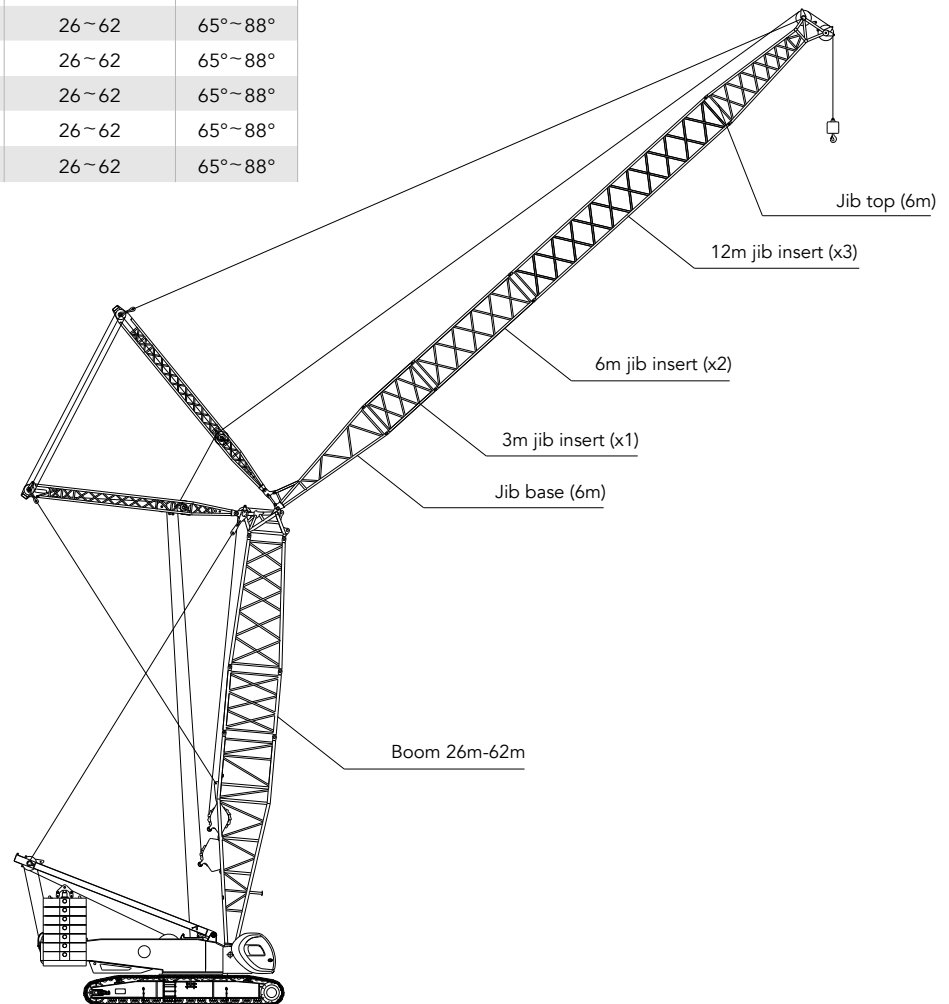
SCC2800A Crawler Crane – FJ (without boom hook, rear counterweight 112t + carbody counterweight 40t) 3/4													
No main hook, jib offset angle 30°													
Boom length (m) R (m)	Jib length (m)	29					32					Jib length (m)	Boom length (m) R (m)
		13	19	24.5	30.5	36	42	13	19	24.5	30.5		
9													9
10													10
12													12
14	27.8						28.1						14
16	26.2						26.5						16
18	24.7	20.6					25.1	20.8					18
20	23.4	19.4	17.5				23.9	19.7					20
22	22.3	18.4	16.5				22.8	18.7	16.7				22
24	21.3	17.5	15.7	13.9			21.8	17.9	15.9	14			24
26	20.5	16.7	14.9	13.2			21	17.1	15.1	13.3			26
28	19.7	16	14.2	12.6	11.8		20.2	16.4	14.5	12.7	11.8		28
30	19	15.3	13.6	12	11.2		19.5	15.7	13.8	12.2	11.3		30
32	18.4	14.8	13	11.5	10.7	10	18.9	15.2	13.3	11.6	10.8	10.2	32
34	17.9	14.3	12.5	11	10.3	9.5	18.4	14.7	12.8	11.2	10.3	9.7	34
36	17.5	13.8	12.1	10.5	9.8	9.1	17.9	14.2	12.3	10.8	9.9	9.3	36
38		13.4	11.7	10.2	9.4	8.7	17.5	13.8	12	10.4	9.5	8.9	38
40		13	11.3	9.8	9.1	8.4		13.4	11.6	10	9.2	8.6	40
42		12.7	11	9.5	8.7	8.1		13.1	11.3	9.7	8.8	8.3	42
44			10.7	9.2	8.4	7.8		12.8	11	9.4	8.5	8	44
46			10.5	8.9	8.2	7.5			10.7	9.1	8.3	7.7	46
48			10.2	8.6	7.9	7.2			10.5	8.8	8	7.4	48
50				8.4	7.7	6.9			10.2	8.6	7.8	7.1	50
52				8.2	7.4	6.6				8.4	7.5	6.8	52
54				8	7.2	6.4				8.2	7.3	6.6	54
56					7.1	6.2				8	7.2	6.4	56
58					6.9	5.9					7	6.1	58
60					6.8	5.7					6.8	5.9	60
62						5.5					6.7	5.7	62
64						5.3						5.5	64
66												5.4	66
68												5.2	68
70													70
72													72
74													74
76													76
78													78

FJ Load Chart

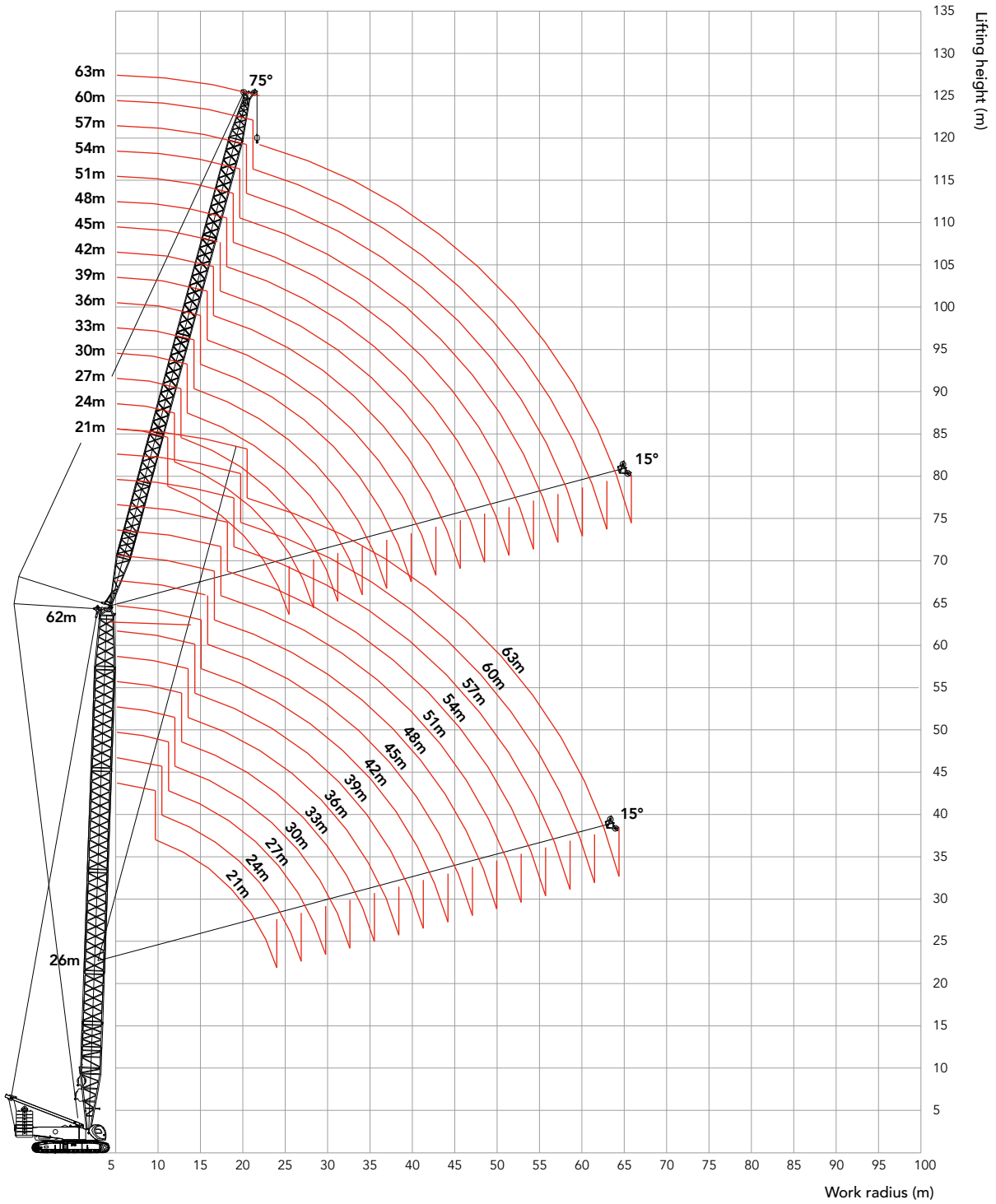
SCC2800A Crawler Crane – FJ (without boom hook, rear counterweight 112t + carbody counterweight 40t) 4/4															
No main hook, jib offset angle 30°															
Boom length (m)		59						62						Boom length (m)	
Jib length (m)	R (m)	13	19	24.5	30.5	36	42	13	19	24.5	30.5	36	42	Jib length (m)	R (m)
10															10
12															12
14															14
16															16
18	27.6							27.7							18
20	26.6	21.2						26.8							20
22	25.7	20.5						25.9	20.6						22
24	24.9	19.8	17.1					25.1	19.9	17.2					24
26	24.1	19.1	16.5					24.4	19.3	16.7					26
28	23.5	18.5	16	13.7				23.7	18.7	16.1	13.8				28
30	22.8	18	15.5	13.3	12.1			23.1	18.2	15.6	13.4				30
32	22.2	17.5	15	12.8	11.7			22.5	17.7	15.2	12.9	11.8			32
34	21.6	17	14.6	12.5	11.4	10.3		21.9	17.2	14.7	12.6	11.4	10.3		34
36	21.1	16.5	14.2	12.1	11	10		21.4	16.7	14.3	12.2	11.1	10		36
38	20.6	16.1	13.8	11.7	10.7	9.7		20.3	16.3	14	11.9	10.8	9.7		38
40	19.1	15.7	13.5	11.4	10.4	9.4		18.5	15.9	13.6	11.5	10.5	9.4		40
42	17.5	15.4	13.1	11.1	10.1	9.1		16.9	15.6	13.3	11.2	10.2	9.2		42
44	16	15	12.8	10.8	9.8	8.8		15.4	15.2	13	11	9.9	8.9		44
46	14.6	14.7	12.5	10.6	9.6	8.6		14.1	14.9	12.7	10.7	9.7	8.7		46
48	13.3	14.2	12.3	10.3	9.3	8.4		12.8	13.7	12.4	10.4	9.4	8.4		48
50	12.1	13	12	10.1	9.1	8.1		11.6	12.5	12.2	10.2	9.2	8.2		50
52	10.9	11.9	11.8	9.9	8.9	7.9		10.6	11.4	12	10	9	8		52
54	9.9	10.8	11.6	9.6	8.7	7.7		9.6	10.4	11.1	9.8	8.8	7.8		54
56	9	9.9	10.7	9.4	8.5	7.5		8.6	9.4	10.2	9.6	8.6	7.6		56
58	8.1	9	9.8	9.3	8.3	7.4		7.7	8.5	9.3	9.4	8.4	7.5		58
60	7.2	8.1	8.9	9.1	8.1	7.2		6.9	7.7	8.4	9	8.2	7.3		60
62		7.3	8.1	8.7	8	7		6.1	6.9	7.6	8.2	8.1	7.1		62
64		6.5	7.3	7.9	7.8	6.8			6.1	6.9	7.5	7.9	6.9		64
66		5.8	6.6	7.2	7.6	6.6			5.4	6.2	6.7	7.3	6.8		66
68			5.9	6.5	7	6.5			4.7	5.5	6.1	6.6	6.6		68
70			5.3	5.8	6.4	6.3				4.8	5.4	6	6.4		70
72				5.2	5.8	6.2				4.2	4.8	5.3	5.8		72
74				4.6	5.2	5.6				3.6	4.2	4.7	5.2		74
76				4	4.6	5					3.6	4.2	4.6		76
78					4	4.5					3.1	3.6	4.1		78
80						3.5	3.9					3.1	3.5		80
82						3	3.4					2.6	3		82
84							2.9					2.1	2.5		84
86							2.5						2.1		86
88							2						1.6		88

LJ Configuration

LJ Configuration					
Jib length (m)	Insert			Boom length (m)	Boom angle
	3 m	6 m	12m		
21	1	1	-	26~62	65°~88°
24	-	2	-	26~62	65°~88°
27	1	2	-	26~62	65°~88°
30	-	1	1	26~62	65°~88°
33	1	1	1	26~62	65°~88°
36	-	2	1	26~62	65°~88°
39	1	2	1	26~62	65°~88°
42	-	1	2	26~62	65°~88°
45	1	1	2	26~62	65°~88°
48	-	2	2	26~62	65°~88°
51	1	2	2	26~62	65°~88°
54	-	1	3	26~62	65°~88°
57	1	1	3	26~62	65°~88°
60	-	2	3	26~62	65°~88°
63	1	2	3	26~62	65°~88°



LJ Working Radius



Unit: t

LJ Load Chart

Note:

1. Actual Lifting Capacity shall deduct the weight of hook blocks, lifting devices, and wire ropes reeving between the hooks and boom top from the rate capacity.
2. Rated capacity in the load charts is calculated when the crane is on firm and level ground, and the load lifting is slowly and steadily.

SCC2800A Crawler Crane – LJ 1/4																
Boom length 26m Boom angle 85° Jib length 21~63m rear counterweight 112t carbody counterweight 40t																
R	21	24	27	30	33	36	39	42	45	48	51	54	57	60	63	R
12	103															12
14	96.8	94.8	92.9													14
16	86	84.5	82.4	80.9	79.2											16
18	76.6	75.4	74.3	73.1	71.8	70.3	68.2									18
20	70	68.5	67.5	66	65	63.7	62.3	61.2	60.1	58.3						20
22	60.3	59.9	61.5	60.3	59.2	58.2	57.5	56.4	54.9	53.9	52.7	50.1				22
24	49.8	54.5	53.5	54.8	54.5	53.7	53.1	52	51	50	49	47.6	44.4	39.9		24
26		46.5	49.5	48.3	48.1	48.8	49.1	48.1	47.1	46.4	45.5	44.3	43.6	39.3	35.3	26
28			43	45.2	44.9	43.5	43.9	44.3	44	43.3	42.6	41.6	40.6	38.7	34.8	28
30			36.7	39.9	40.3	38.9	39.4	39.8	40	40.1	39.7	39	38.2	37.1	34.2	30
32				34.8	35.8	37	35.5	36	36.2	36.4	36.4	36.5	35.8	34.9	33.4	32
34					31.6	33.2	34.1	32.6	32.9	33.1	33.2	33.2	33.2	32.9	31.4	34
36					29.1	29.6	30.7	31.5	30	30.2	30.3	30.4	30.4	30.3	29.7	36
38						27.9	27.6	28.6	29.1	27.6	27.7	27.9	27.8	27.8	27.7	38
40							24.6	25.9	26.5	27	25.4	25.6	25.6	25.6	25.5	40
44								22.2	21.8	22.5	22.9	21.6	21.7	21.7	21.7	44
48									18.4	18.5	19.1	19.6	19.8	18.5	18.5	48
52											15.6	16.3	16.7	16.9	17	52
56												14.3	13.9	14.3	14.4	56
60														11.7	12.1	60
64															9.7	64

LJ Load Chart

SCC2800A Crawler Crane – LJ 2/4																
Boom length 38m Boom angle 85° Jib length 21~63m rear counterweight 112t carbody counterweight 40t																
R	21	24	27	30	33	36	39	42	45	48	51	54	57	60	63	R
14	96	94														14
16	88	85.7	83	81.3												16
18	79.6	78.4	77.1	75	72.9	70.8										18
20	71.5	70.4	69.3	68.5	67.4	66.3	64.2	62.5								20
22	64.3	63.9	62.9	62.1	61.1	60.3	59.4	58.7	56.7	52.5	48.2					22
24	55.1	57.5	57.3	56.8	55.9	55.1	54.3	53.6	52.8	51.2	47.3	43.3	39.1			24
26	46.9	50.5	51.9	51.4	51.2	50.7	49.9	49.3	48.6	47.9	45.8	42.5	38.7	35	31.6	26
28		45.3	46.2	47.2	46.9	46	46.2	45.6	44.9	44.3	43.6	41.4	38.3	34.6	31.2	28
30			39.9	42.5	42.8	42.8	41.6	42	41.7	41.1	40.4	39.9	37.4	34.2	30.8	30
32				37.3	38	39.1	39.2	37.9	38.1	38.2	37.7	37.2	36.4	33.8	30.4	32
34				34.3	33.6	35.1	35.9	36.1	34.5	34.7	34.8	34.8	34.2	32.9	30	34
36					31.5	31.3	32.4	33.1	33.3	31.6	31.7	31.8	31.7	31.5	29.7	36
38						29.7	29.1	30	30.5	30.8	29	29.1	29.1	29	28.2	38
40						25.8	26.1	27.2	27.8	28.2	28.4	26.7	26.7	26.7	26.6	40
44								23.6	22.9	23.5	23.9	24.1	22.6	22.6	22.5	44
48									19.8	19.4	20	20.4	20.6	20.7	19.2	48
52										16.5	17.8	17.1	17.4	17.6	17.7	52
56												15.2	14.5	14.9	15	56
60													12.7	12.3	12.6	60
64															11.4	64
66															10	66

Unit: t

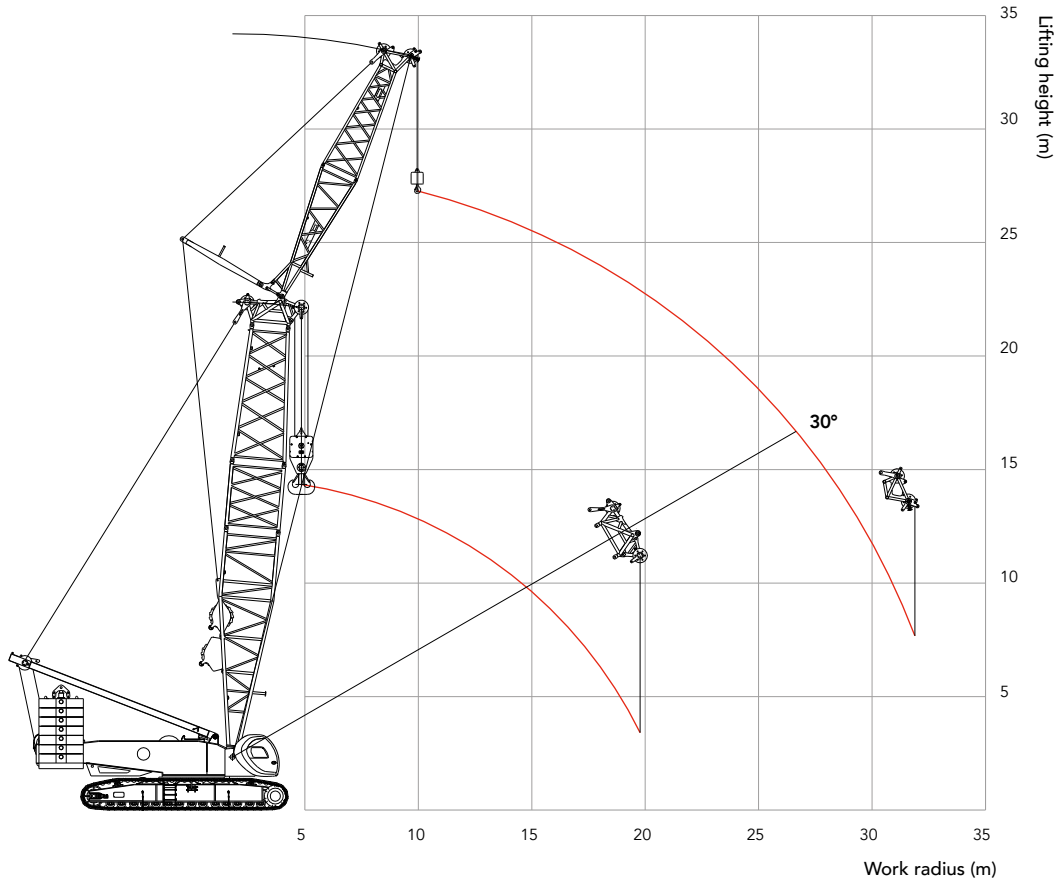
LJ Load Chart

SCC2800A Crawler Crane – LJ 3/4																
Boom length 50m Boom angle 85° Jib length 21~63m rear counterweight 112t carbody counterweight 40t																
R	21	24	27	30	33	36	39	42	45	48	51	54	57	60	63	R
14	85.8															14
16	81.7	79.6	77.1													16
18	74.7	73.6	72	69.7	65											18
20	67.3	66.3	65.2	64.4	62.6	58.5	54.4									20
22	61.2	60.2	59.3	58.6	57.6	56	52.6	49.1	45.9							22
24	56.1	55.2	54.3	53.6	52.8	52	50.4	47.5	44.5	41.6	38.8	36				24
26	51.6	50.9	50.1	49.5	48.6	47.9	47.2	45.5	42.7	40.3	37.6	35.2	32.6	29.7		26
28		46.9	46.4	45.8	45.1	44.4	43.7	43.1	41	38.7	36.4	34.3	32	29.5	26.8	28
30			42.9	42.7	42	41.3	40.6	40.1	39.3	37.2	35.2	33.2	31.2	29	26.5	30
32			39.5	39.4	39.2	38.6	37.9	37.4	36.8	35.7	33.9	31.9	30.2	28.3	26.2	32
34				36.5	36.3	36.1	35.6	35.1	34.5	33.9	32.5	30.9	29.2	27.5	25.8	34
36					33.7	33.5	33.3	33	32.4	31.8	31	29.7	28.1	26.6	25	36
38					29.6	31.3	31	30.9	30.5	30	29.4	28.5	27	25.6	24.2	38
40						28.3	28	28.9	28.6	28.3	27.7	27.1	25.9	24.6	23.4	40
44							23.4	25.4	24.4	24.9	24.7	24.4	23.6	22.6	21.7	44
48									21.4	20.8	21.2	21.6	21.4	20.8	19.9	48
52										18.1	19.1	18.2	18.4	18.6	18.1	52
56											15.1	16.3	15.5	15.8	15.9	56
60													13.8	14.4	13.4	60
64														11.6	12.2	64
66															11	66

LJ Load Chart

SCC2800A Crawler Crane – LJ 4/4																
Boom length 62m Boom angle 85° Jib length 21~63m rear counterweight 112t carbody counterweight 40t																
R	21	24	27	30	33	36	39	42	45	48	51	54	57	60	63	R
16	67.8	63.7														16
18	64.3	60.7	56.9	53.9												18
20	60.5	57.7	54.6	51.6	48.5	45.4										20
22	57	54.4	51.8	49.1	46.2	43.7	41.4	39								22
24	52.7	51	48.7	46.6	44.3	42	39.6	37.7	35.3	33.3						24
26	48.7	47.8	45.8	44.2	41.9	40.1	38.1	36.1	34.2	32.3	30.3	28.1	25.9			26
28	45.4	44.5	43	41.6	39.8	37.9	36.2	34.6	32.8	31.1	29.4	27.7	25.6	23.6	21.6	28
30		41.6	40.3	39	37.3	36.1	34.6	33.1	31.5	30	28.3	26.9	25.2	23.3	21.3	30
32			37.6	36.4	35.1	33.9	32.7	31.5	30.2	28.7	27.3	25.9	24.5	23	21.1	32
34				34	33	32	31	29.8	28.7	27.5	26.2	25	23.7	22.4	20.8	34
36				31.9	30.8	30.1	29.3	28.3	27.3	26.2	25.2	24.1	22.8	21.8	20.4	36
38					28.8	28.1	27.4	26.8	25.9	24.9	24	23	22	21	19.8	38
40						26.5	25.8	25.3	24.5	23.7	22.9	22	21.1	20.1	19.2	40
44							22.7	22.3	21.7	21.3	20.7	20.1	19.3	18.5	17.7	44
48								19.7	19.3	19	18.6	18.2	17.5	16.9	16.4	48
52										16.8	16.5	16.2	15.8	15.4	15	52
56											14.7	14.5	14.2	13.9	13.5	56
60													12.7	12.5	12.2	60
64														11.2	11	64
68															9.9	68

FJh Configuration (Boom to jib angle : 20°)



FJh Load Chart

Note:

1. Actual Lifting Capacity shall deduct the weight of hook blocks, lifting devices, and wire ropes reeving between the hooks and boom top from the rate capacity.
2. Rated capacity in the load charts is calculated when the crane is on firm and level ground, and the load lifting is slowly and steadily.

SCC2800A Crawler Crane – FJh 1/2

Boom to jib angle 22° Rear counterweight 112t Carbody counterweight 40t					
R	Boom 20m Jib 7m		Boom 23m Jib 7m		R
	Main hook capacity (no load on aux. hook)	Aux. hook capacity (no load on main hook)	Main hook capacity (no load on aux. hook)	Aux. hook capacity (no load on main hook)	
5	250				5
6	245		244		6
7	215		213.5		7
8	190	105	188		8
9	171	98	169	96	9
10	160	96	156	93	10
12	130	88	120	85	12
14	102	74	95	72	14
16	82	67	77	65	16
18	68	62	64	60	18
20	19/50	57	19/48	55	20
22		50		46	22
24		44		42	24
26		39		35	26
28					28
30					30

Unit: t

FJh Load Chart

SCC2800A Crawler Crane – FJh 2/2			
Boom to jib angle 20° Rear counterweight 112t Carbody counterweight 40t			
Boom 20m Jib 12m			
R	Main hook capacity (no load on aux. hook)	Aux. hook capacity (no load on main hook)	R
5	249		5
6	227		6
7	190		7
8	174		8
9	150		9
10	140	96	10
12	106	88	12
14	82	74	14
16	66	62.8	16
18	52.5	53.4	18
20	19/49	46.2	20
22		40.4	22
24		35.8	24
26		31.9	26
28		28.6	28
30		25.8	30



Vertu Equipment
0800 837 888
vertuequipment.co.nz
info@vertuequipment.co.nz

Auckland
510 Ellerslie Panmure
Highway, Mt Wellington

Tauranga
67 Hull Road, Mt Maunganui

Christchurch
52 Hickory Place,
Islington.