

QUALITY CHANGES THE WORLD




PRODUCT  
SPECIFICATIONS




# STC350T4

SANY TRUCK CRANE  
35T LIFTING CAPACITY



 35 t

 35 m

 1120 kN·m

[www.sanyglobal.com](http://www.sanyglobal.com)

R HAND DRIVE AVAILABLE  
右舵可售

V1.3

### **All new high bearing capacity chassis**

High strength rectangular carrier frame of increased torsion and bending resistance and working convenience.

### **Super strong performance**

Large cross section U shape boom, 35m in full extension, max. lifting moment up to 1120kN·m, max. lifting moment of full-extension boom 659kN·m, leading among its same class.

### **Extra large operator's cab with panoramic skylight**

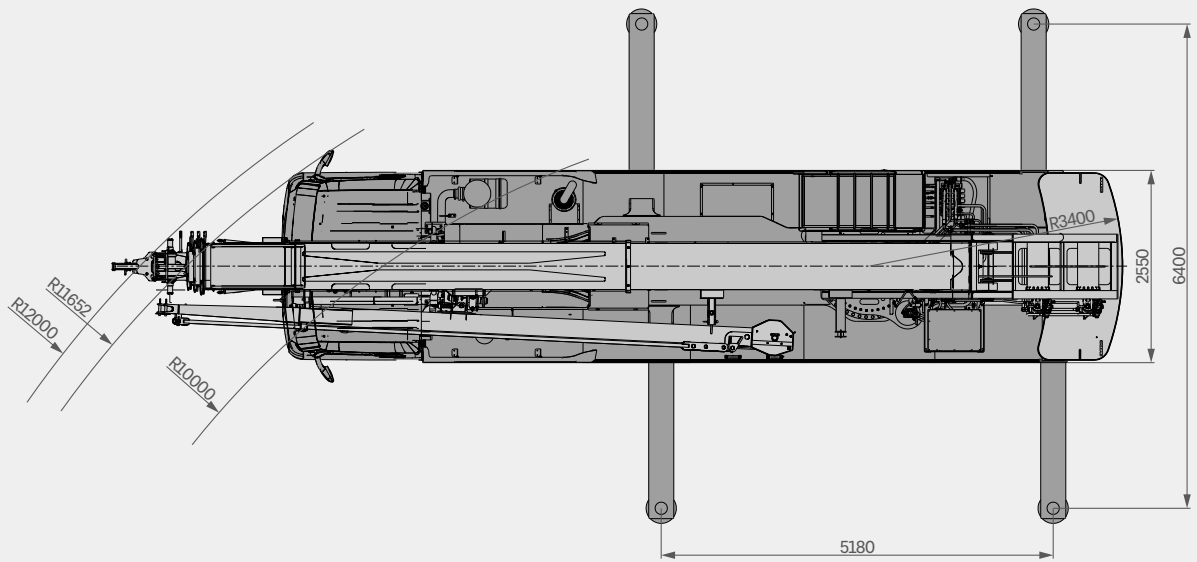
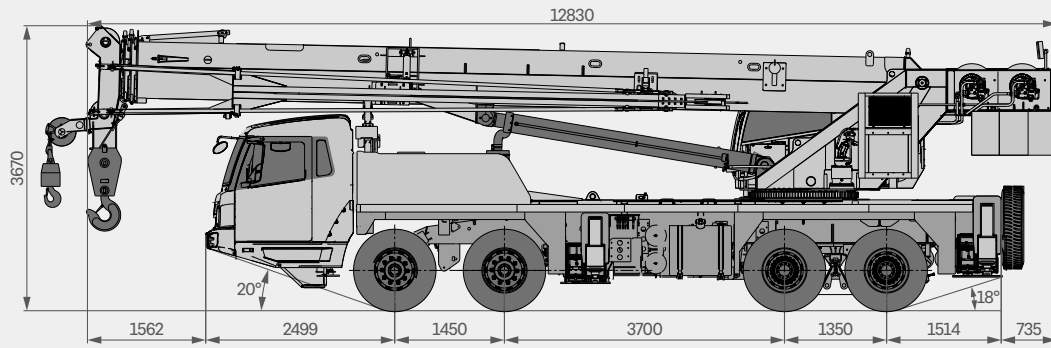
The four sides are designed with super large area of glass for eliminated blind spot. Dual-track window functions bilateral sliding for better ventilation. The 5.7" HD LMI display provides safety guides for the whole working process.

## **SANY TRUCK CRANE STC350T4 / 35T LIFTING CAPACITY**





# Overall Dimensions



# Technical Specification

CATEGORY 类型	ITEM 项目	UNIT 单位	VALUE 参数	
CAPACITY 额定起重量	Max. lifting capacity 最大起重量	t	35	
WEIGHT 重量参数	Gross weight 整机总质量	kg	30000	
POWER 发动机参数	Engine model 发动机型号 ( 排放标准 )	-	ISLe290 30 (Euro III )	
	Max. engine power 发动机最大功率	kW/rpm	213/2100	
	Max. engine torque 发动机最大输出扭矩	N·m/rpm	1050/1100-1400	
DIMENSIONS 尺寸参数	Overall length 整机全长	mm	12830	
	Overall width 整机全宽	mm	2550	
	Overall height 整机全高	mm	3670	
TRAVEL 行驶参数	Max. travel speed 最高行驶速度	km/h	90	
	Steering radius 转弯半径	Min.steering radius 最小转弯半径	m	10
		Min.steering radius of boom tip 臂头最小转弯半径	m	12
	Wheel formula 车轮模式	-	8 × 4 × 4	
	Min.ground clearance 最小离地间隙	mm	240	
	Approach angle 接近角	°	20	
	Departure angle 离去角	°	18	
	Max.gradeability 最大爬坡度	%	40	
	Fuel consumption per 100km 每 100 公里油耗	L	32	
MAIN PERFORMANCE 主要性能参数	Working temperature range 使用温度区间	°C	-25~40	
	Min.rated lifting radius 最小额定幅度	m	2.5	
	Tail slewing radius 转台尾部回转半径	mm	3400	
	Boom sections (Qty.) 臂节数	-	4	
	Boom shape 臂形状	-	U shape U 形	
	Max.lifting moment 最大起重力矩	Basic boom 基本臂	kN·m	1120
		Full-extension boom 全伸主臂	kN·m	659
		Full-extension boom + jib 全伸主臂 + 副臂	kN·m	30
	Boom length 臂长	Basic boom 基本臂	m	10.8
		Full-extension boom 全伸主臂	m	35
		Full-extension boom + jib 全伸主臂 + 副臂	m	43
	Max.lifting height 最大起重高度	Basic boom 基本臂	m	11.3
		Full-extension boom 全伸主臂	m	35.5
		Full-extension boom + jib 全伸主臂 + 副臂	m	43.5
Outrigger span (Longitudinal × Transverse) 支腿跨距 ( 纵 × 横 )	m	5.18 × 6.4		
Jib offset 副臂安装角度	°	5, 15, 30		
AIRCONDITIONER 空调	In operator's cab 上车空调	-	Cooling 制冷	
	In driver's cab 下车空调	-	Heating & cooling 制冷、制热	

# Technical Parameters



## Axle Load 轴荷

Axle 轴	1	2	3	4	Gross weight 总重量
Axle load 轴荷 /kg	5200	5200	9800	9800	30000
Remark 备注	-				



## Hook 吊钩

Rated load 额载 /t	Number of sheaves 滑轮数量	Rope rate 倍率	Hook weight 吊钩重量 /kg
35	4	8	320
5	0	1	100



## Operations 主要动作参数

Item 项目	Max.single rope lifting speed (empty load) 单绳速度 (空载)	Rope diameter/length 钢丝绳直径 / 长度	Max. single line pull 最大单绳拉力
Main winch 主卷扬	120m/min	16mm/165m	4.4t
Auxiliary winch 副卷扬	120m/min	16mm/95m	4.4t
Slewing speed 回转速度		2.5r/min	
Full luffing up/down time of boom 主臂起落幅时间		45s/60s	
Full extension/retraction time of boom 主臂伸缩时间		48s/40s	
Outrigger jack 垂直支腿	Retraction 收	15s	
	Extension 放	16s	
Outrigger beam 水平支腿	Retraction 收	15s	
	Extension 放	16s	

# Crane Introduction

Carrier 下车

## Driver's cab 驾驶室

- Self-developed full width low-mounted cab in ergonomic design, featuring vibration and external noise isolation.
- Equipped with mechanical shock absorbing seat, three-point safety belt, adjustable direction pipe string, full seat with headrest, radio, cigarette lighter, sun shade, and entertainment screen interface, more comfortable, safe and user-friendly.
- 自主开发全宽低置式驾驶室，采用人体工程学原理设计，减震性和封闭性优良。
- 配备机械式减震座椅，三点式安全带，可调节方向管柱，全座椅配备头枕、收音机、点烟器、遮阳帘、配备娱乐屏接口、仪表齐全，极具舒适性、安全性、人性化。

## Carrier frame 车架

- The frame is a box structure welded with high-strength steel, featuring increased bearing capacity.
- 车架为高强度钢板焊接而成的箱形结构，承载能力强。

## Engine 发动机

- Model: Dongfeng Cummins ISLe29030 Inline six-cylinder diesel engine with watercooler and inter cooler.
- Emission standard: Euro III .
- Fuel reservoir capacity: 300L.
- 型式：东康 ISLe29030，直列六缸、水冷却、增压中冷、柴油发动机。
- 排放标准：Euro III。
- 燃料箱有效容积：300L。

## Transmission 变速箱

- 9-speed manual transmission with synchronizer, large speed ratio range, adaptable to slope climbing and high-speed traveling.
- 手动带同步器变速箱，9 挡，速比范围大，既可满足低速场地爬坡 行驶，又可满足高速行驶。

## Transmission shaft 传动轴

- Optimized layout, higher torque output via contrate gear connecting transmission shaft cardan.
- 优化的传动轴布置，传动轴传动平稳、可靠。最优化力传输，采用端面齿联结传动轴，传递扭矩大。

## Axle 车桥

- Axles 1, 2 are steered, axles 3, 4 are drive axles with built-in differential lock, realizing tougher ability to rough-terrain travelling. One stage reducer, press-welding axle housing technology, bearing capacity is stronger.
- 3、4 轴为驱动轴，1、2 轴为转向轴，驱动轴 3 轴内置轴间差速器锁，使车辆有更强的脱困能力；单减桥，冲焊桥壳工艺，承载能力更强。

## Suspension system 悬挂

- Front suspension is realized by leaf spring, and rear rubber. The system's strength is verified by 100,000 cycling fatigue tests, hence ride comfort is out of question.
- 一二桥采用钢板弹簧悬挂系统，三四桥采用橡胶悬挂系统，悬挂系统经过超过 10 万次的疲劳试验，保证强度的同时兼顾乘坐的舒适性。

## Steering 转向系统

- Equipped with cyclic ball power steering gear, double circuit system hydraulic steering.
- Mechanical steering with hydro booster in axle 1 and axle 2.
- Steering mode: Highway driving mode.
- 配置循环球动力转向器，双回路系统液压转向装置。
- 1、2 桥采用液压助力机械转向控制。
- 转向模式：公路行驶模式。

## Tires 轮胎

- Thirteen tires sized 12R22.5, strong bearing capacity and durability.
- 13（轮胎数）—轮胎规格：12R22.5，承载能力强，耐用。

## Wheel formula 车轮模式

- 8 x 4 x 4。

## Outrigger 支腿

- H-type layout, four point support, easy to operate; adopt fine grain high strength steel plate, outriggers hydraulically telescoping at horizontal directions.
- H 型支腿 4 点支撑，易操作、稳定性强；采用细晶粒高强度钢板材料，活动支腿全液压横向伸缩。

## Brake 制动系统

- Air servo functions on all wheels with double circuit system.
- The braking system includes service braking, parking braking, emergency braking and assisting braking.
- Service brake: air servo, double circuit.
- Parking brake: functioning at axles 3 and 4 by spring-loaded air chamber.
- Emergency brake: performed by accumulator releasing pressure.
- Assisting brake: engine exhaust brake, safety assured when driving down long slopes.
- 所有车轮均用空气伺服制动器，双回路制动系统，发动机带排气制动。
- 制动系统包括行车制动、驻车制动、应急制动和辅助制动。
- 行车制动采用双回路制动系统，所有车轮均用空气伺服制动器。
- 驻车制动是通过气室内弹簧作用在第三、四桥上。
- 应急制动阀由驻车制动兼做应急制动。
- 辅助制动为排气制动，保证在下长坡时的制动安全，保证行车的安全可靠。

## Electrical system 电气系统

- 2\*12V maintenance-free battery with a mechanical power switch, the overall power can be cut off manually. The BUS control system integrates data of engine, gearbox, lighting, ABS braking system, communication, instrument, man-machine interaction, and transmit multiple signals to different instruments or devices simultaneously, simplifying transmission circuit and making maintenance easier.
- 2 × 12V 免维护蓄电池，配有机械式电源总开关，可手动切断整车电源；总线控制系统将发动机、变速箱、照明、ABS 制动系、通讯、仪表、人机交互等系统的连接线路，通过一条线路把多路且需要同时传输的信号传给不同的仪表或装置，简化线路，便于检修和保养。

# Crane Introduction

## Operator's cab 操纵室

- It is made of pressed and welded structure, equipped with safety glass, sun shade, outward opening door, panoramic skylight. 4 sides are equipped with large glass ensuring no blind spot; Double guide glass window: the glass can slide back and forth for ventilation and no light reflection during night operation; 5.7" HD color display: loading information is comprehensive, clear. Cooling A/C available.
- 采用冲压成型的全焊接结构, 装有安全玻璃, 遮阳帘, 外开式车门, 全景式天窗, 4面配置超大玻璃, 吊装“无死角”; 双导轨玻璃窗: 玻璃可前后滑动, 通风透气, 晚上吊装不反光, 操作舒适、轻松; 5.7寸高清彩色显示屏: 吊载信息全面、清晰, 配备单冷空调。

## Boom & telescoping system 伸缩系统

- The boom structure adopts anti-torsion design, made of imported high-strength steel plate, 4 U shape sections of high stability. Telescoping via rope arranger and a double-acting cylinder which controls all boom sections, achieving a variety of length combinations.
- 臂结构采用抗扭曲设计, 采用进口高强度钢板制作, 4节U型主臂, 具有极高的稳定性, 伸缩采用绳排, 一个双作用油缸可以控制所有吊臂的伸缩, 达到多种臂长组合。

## Hoist 起升系统

- Normally closed type winch brake, winch balance valve available to avoid hook stall.
- Standard 5t, 30t hook, 4V main wire rope diameter  $\phi$  16mm, length 165m; 4V aux. wire rope length 95m.
- 常闭式卷扬制动器, 并设置卷扬平衡阀, 可防止落钩失速; 标配 5t、30t 吊钩, 直径  $\phi$  16mm, 长 165m 4V 钢丝绳 (主) 长 95m 4V 钢丝绳 (副)。

## Luffing system 变幅系统

- Active luffing down, stable and fast. Luffing angle:  $-2.5^{\circ} \sim 80^{\circ}$  .
- 加压落幅, 落幅稳定快捷; 变幅角度:  $-2.5^{\circ} \sim 80^{\circ}$  。

## Hydraulics 液压系统

- Adopt high-quality oil pump, motor, valve and other key hydraulic components to ensure the stability and reliability of the hydraulic system;
- Luffing and telescoping system using open system, different action applied with different pressure levels, so as to achieve energy saving, safe control. The luffing mechanism adopts active luffing down, which is stable and fast.
- Load-sensing system, the main pump with dual plunger variable displacement pump, energy saving and highly efficient.
- 采用高品质的油泵、马达、阀等关键液压元件, 保证液压系统稳定、可靠。
- 变幅伸缩系统采用开式系统, 不同动作采用不同的压力等级, 从而实现节能、安全的控制变幅和伸缩动作; 变幅机构采用加压落幅, 落幅稳定快捷。
- 采用负载敏感系统, 主泵采用双联柱塞变量泵, 节能高效。

## Slewing 回转系统

- Slewing valve integrated in main valve, normally closed type brake available to prevent slip.
- 回转阀与主阀集成, 采用常闭式制动, 防止溜车。

## Control system 控制系统

- Vehicle data display system: multiple sensors realizing timely feedback of data information, real-time monitoring, to ensure that working status well managed.
- Man-machine interaction interface: user-friendly design for comprehensive and clear information.
- 整车数据显示系统: 配置丰富的传感器件, 及时反馈数据信息, 实现实时监控, 确保随时掌控整车工作状态。
- 人机交互界面: 人机交互界面设计人性化, 信息丰富而清晰。

## Counterweight 配重

- Fixed counterweight 4t, no movable unit.
- 固定配重 4t, 无活动配重。

## Safety equipment 安全装置

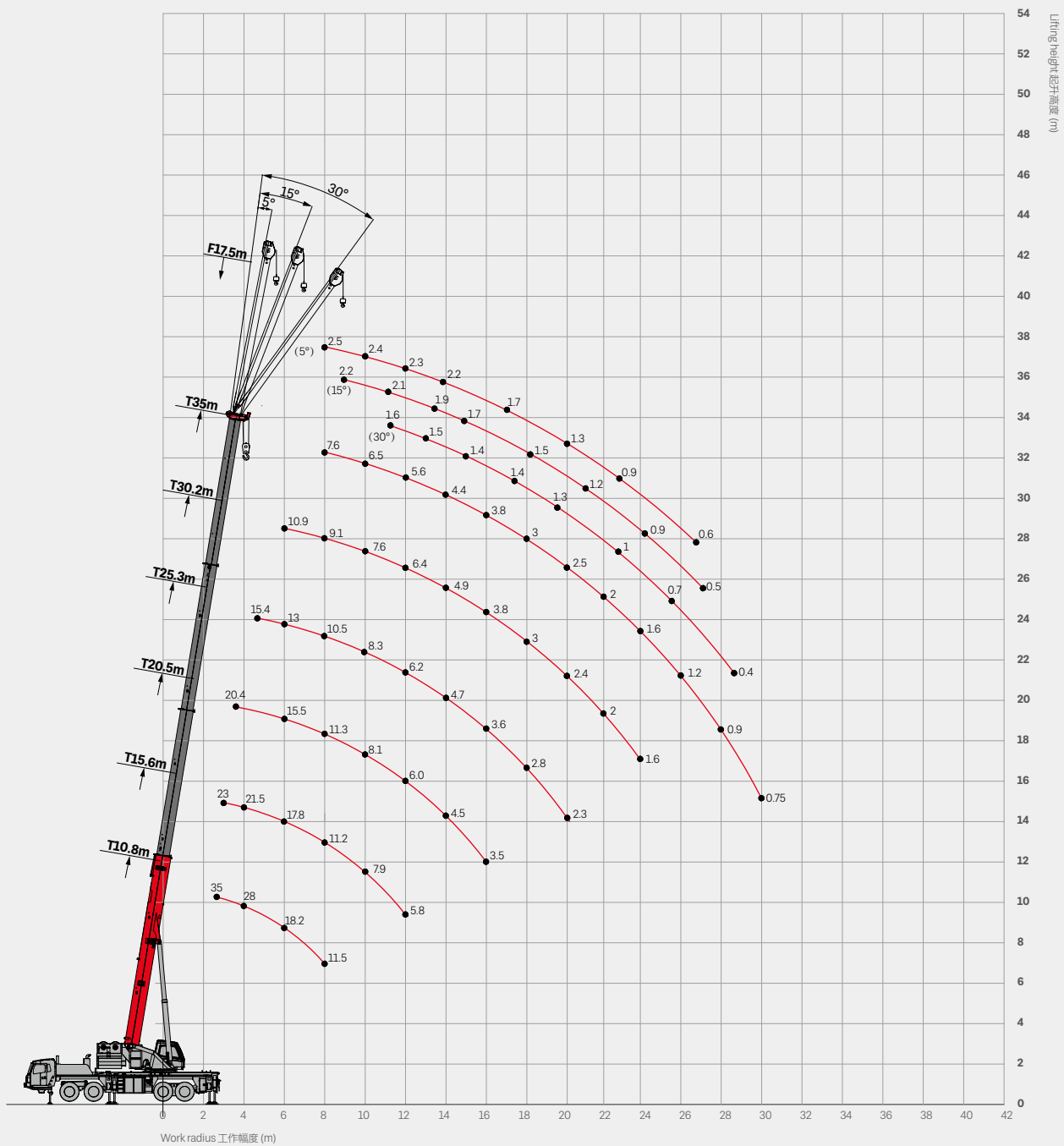
- Hydraulic balance valve, relief valve, double-direction hydraulic-clocke and other components to achieve the stability and reliability of the hydraulic system.
- 液压系统配置液压平衡阀、溢流阀、双向液压锁等元件, 实现液压系统稳定可靠。

## Optional equipment at extra fees 选配

- Slewing buzzer.
- Special painting.
- Other equipment available upon request.
- 回转蜂鸣器
- 特殊涂装
- 其他配置视需求定



# Operating Range



# Load Chart-Telescopic Boom



Unit: kg

Radius (m) 幅度	10.8	15.6	20.5	25.3	30.2	35	Radius (m) 幅度
2.5	35000						2.5
3	30000	23000					3
3.5	30000	23000	20400				3.5
4	28000	21500	20400				4
4.5	25400	20000	18900	15400			4.5
5	22300	20000	17900	14800			5
5.5	20200	19000	16900	13900			5.5
6	18200	17800	15500	13000	10900		6
6.5	15700	14800	14400	12300	10500		6.5
7	14200	14200	13300	11600	10000		7
8	11500	11200	11300	10500	9100	7600	8
9		9500	9700	9600	8300	7000	9
10		7900	8100	8300	7600	6500	10
11		6800	7000	6900	7000	6000	11
12		5800	6000	6200	6400	5600	12
14			4500	4700	4900	4400	14
16			3500	3600	3800	3800	16
18				2800	3000	3000	18
20				2300	2400	2500	20
22					2000	2000	22
24					1600	1600	24
26						1200	26
28						900	28
30						750	30
Rope rate 钢丝绳倍率	8	8	7	5	4	3	Rope rate 钢丝绳倍率

# Load Chart-Jib



Unit: kg

Boom angle (° ) 主臂仰角	35+8			Boom angle (° ) 主臂仰角
	5°	15°	30°	
78	2500	2200	1600	78
75	2400	2100	1500	75
72	2300	1900	1400	72
70	2200	1700	1400	70
65	1700	1500	1300	65
60	1300	1200	1000	60
55	900	900	700	55
50	600	500	400	50

**Remark:**

1. Value listed are the max. capacity when the crane is in a level condition on solid ground or surface;
2. Radius refers to actual radius with boom deflection considered;
3. Value above are calculated with hooks and lifting slings considered (320kg main hook block, 100kg aux. hook block);
4. When the fifth outrigger is landed in position, value listed are applicable for 360 degree operation;
5. Rated lifting performance on boom point sheave equals 2500kg; boom load capacity shall be 450kg less than value given when jib unfolds;
6. Load value is given according to the larger radius or boom length value when the actual radius or boom length falls between two numbers above.



**Vertu Equipment**  
0800 837 888  
[vertuequipment.co.nz](http://vertuequipment.co.nz)  
[info@vertuequipment.co.nz](mailto:info@vertuequipment.co.nz)

**Auckland**  
510 Ellerslie Panmure  
Highway, Mt Wellington

**Tauranga**  
67 Hull Road, Mt Maunganui

**Christchurch**  
52 Hickory Place,  
Islington.